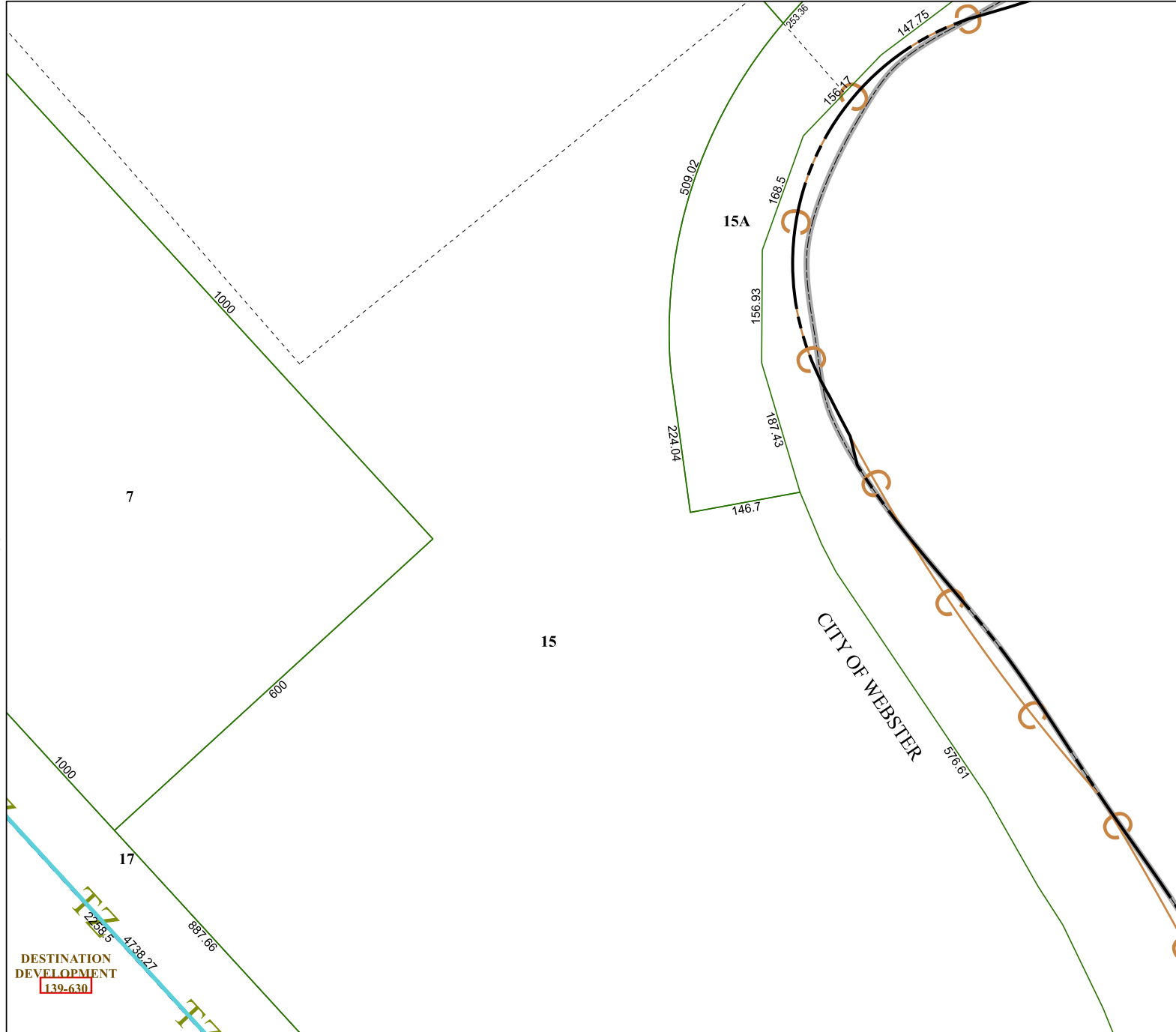


6047B5

6047A12



Harris Central Appraisal District



0 45 90 180 Feet

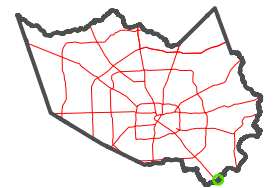
PUBLICATION DATE:
2/13/2024

Geospatial or map data maintained by the Harris Central Appraisal District is for informational purposes and may not have been prepared for or be suitable for legal, engineering, or surveying purposes. It does not represent an on-the-ground survey and only represents the approximate location of property boundaries.



6047B10

MAP LOCATION



FACET 6047B9

7	8	5	6	7
11	12	9	10	11
3	4	1	2	3

6047D1

DESTINATION
DEVELOPMENT
139-630