

6049C9

Harris Central Appraisal District



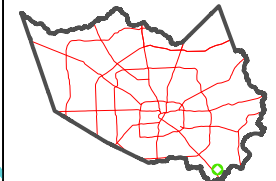
0 45 90 180 Feet

PUBLICATION DATE: 6/22/2023

Geospatial or map data maintained by the Harris Central Appraisal District is for informational purposes and may not have been prepared for or be suitable for legal, engineering, or surveying purposes. It does not represent an on-the-ground survey and only represents the approximate location of property boundaries.



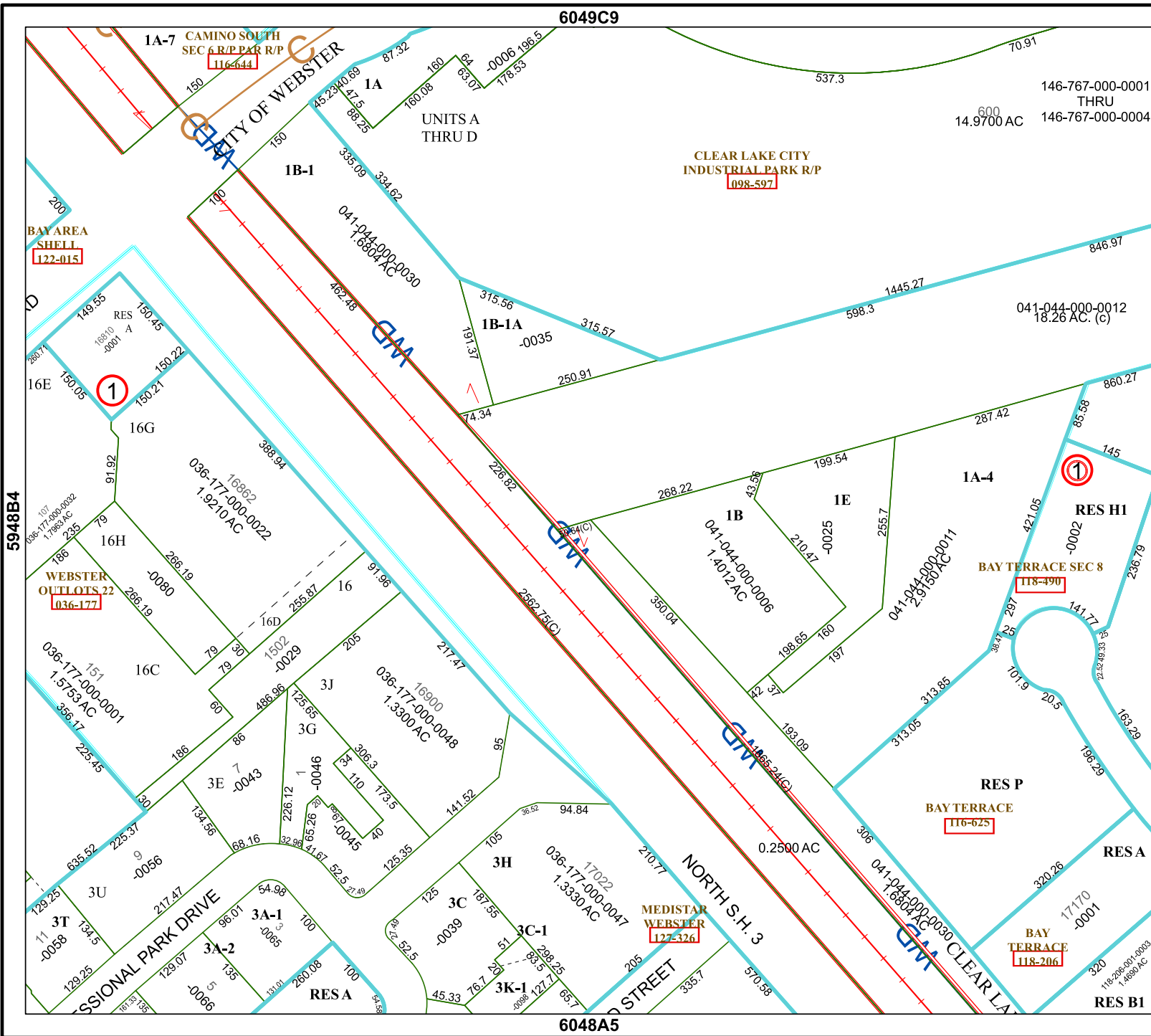
MAP LOCATION



FACET 6048A1

11	12	9	10	11
3	4	1	2	3
7	8	5	6	7

6048A5



5948B4

6048A2

146-767-000-0001 THRU 146-767-000-0004
600
14.9700 AC

041-044-000-0012
18.26 AC. (c)

1A-4

RES H1

BAY TERRACE SEC 8

RES P

BAY TERRACE

RES A

BAY TERRACE

RES B1

MEDISTAR WEBSTER
127-326

BAY TERRACE
118-206

1A-7 CAMINO SOUTH SEC 6 R/P PAR R/P
116-644

CLEAR LAKE CITY INDUSTRIAL PARK R/P
098-597

BAY AREA SHELL
122-015

RES
16810
3001 4

WEBSTER OUTLOTS 22
036-177

036-177-000-0001
1.5753 AC

RES A

UNITS A THRU D

1B-1A

1E

1B

RES A

RES A

RES A

RES A

RES A

RES A

RES A

RES A

RES A

RES A

RES A

PROFESSIONAL PARK DRIVE

NORTH S.H. 3

CLEAR LAKE CITY INDUSTRIAL PARK R/P

CITY OF WEBSTER

CITY OF WEBSTER

CITY OF WEBSTER

CITY OF WEBSTER

CITY OF WEBSTER

CITY OF WEBSTER

CITY OF WEBSTER

CITY OF WEBSTER