

# Harris Central Appraisal District

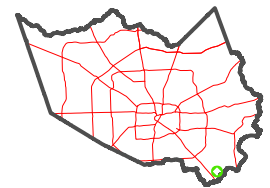


0 45 90 180 Feet

PUBLICATION DATE:  
4/22/2024

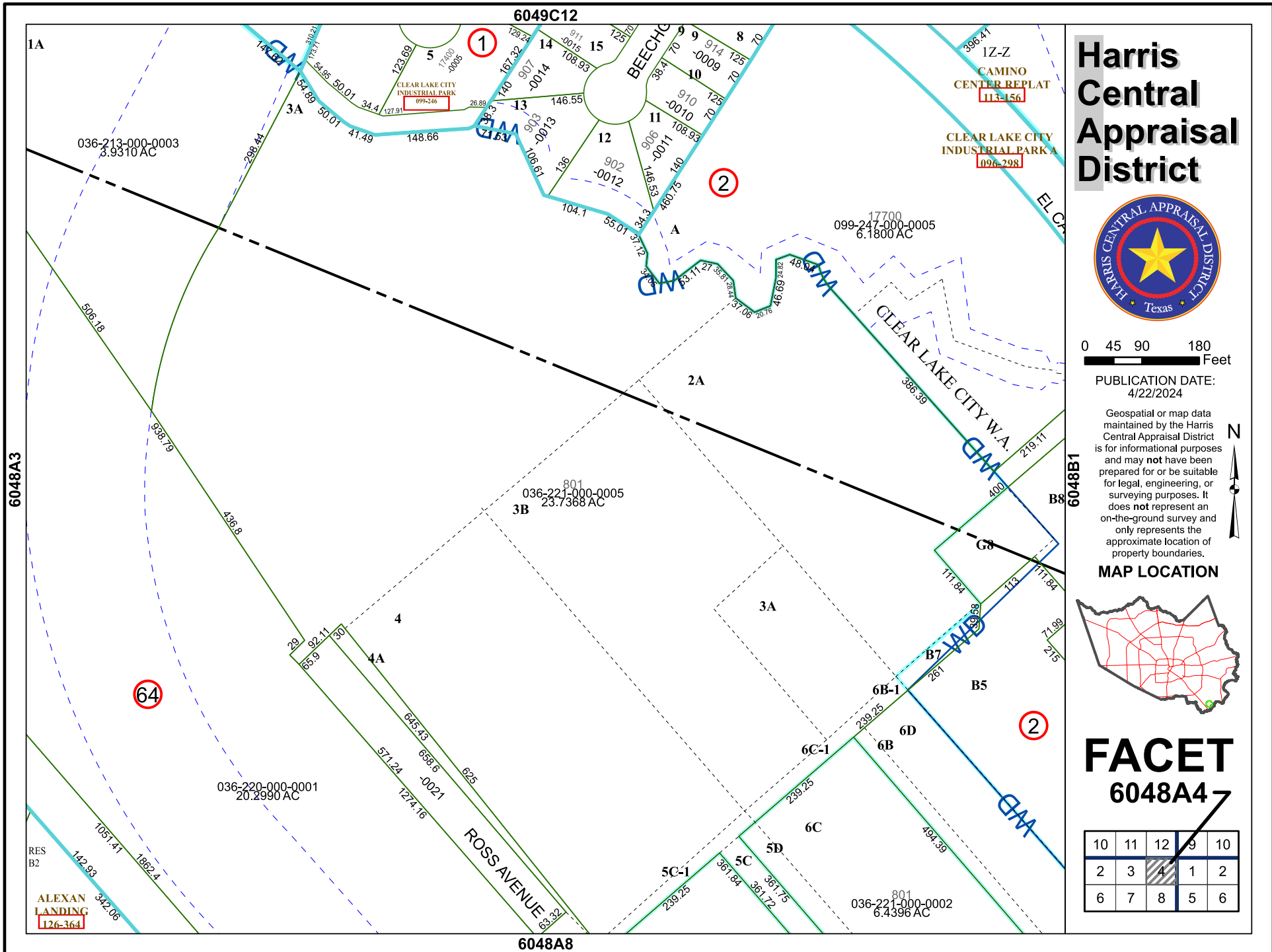
Geospatial or map data maintained by the Harris Central Appraisal District is for informational purposes and may not have been prepared for or be suitable for legal, engineering, or surveying purposes. It does not represent an on-the-ground survey and only represents the approximate location of property boundaries.

### MAP LOCATION



## FACET 6048A4

10	11	12	9	10
2	3	4	1	2
6	7	8	5	6



6048A3

1A

6048A8

6048B1

1Z-Z

6049C12

ALEXAN LANDING  
126-364

ROSS AVENUE  
63-32

BEECHCROFT

CLEAR LAKE CITY W.A.

CAMINO CENTER REPLAT  
113-156

CLEAR LAKE CITY INDUSTRIAL PARK  
096-298

036-213-000-0003  
3.9310 AC

099-247-000-0005  
6.1800 AC

036-221-000-0005  
23.7368 AC

036-220-000-0001  
20.2990 AC

036-221-000-0002  
6.4396 AC

RES B2

