

# Harris Central Appraisal District



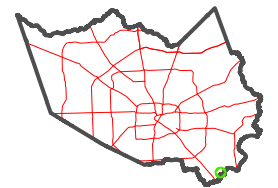
0 45 90 180 Feet

PUBLICATION DATE: 1/4/2023

Geospatial or map data maintained by the Harris Central Appraisal District is for informational purposes and may not have been prepared for or be suitable for legal, engineering, or surveying purposes. It does not represent an on-the-ground survey and only represents the approximate location of property boundaries.

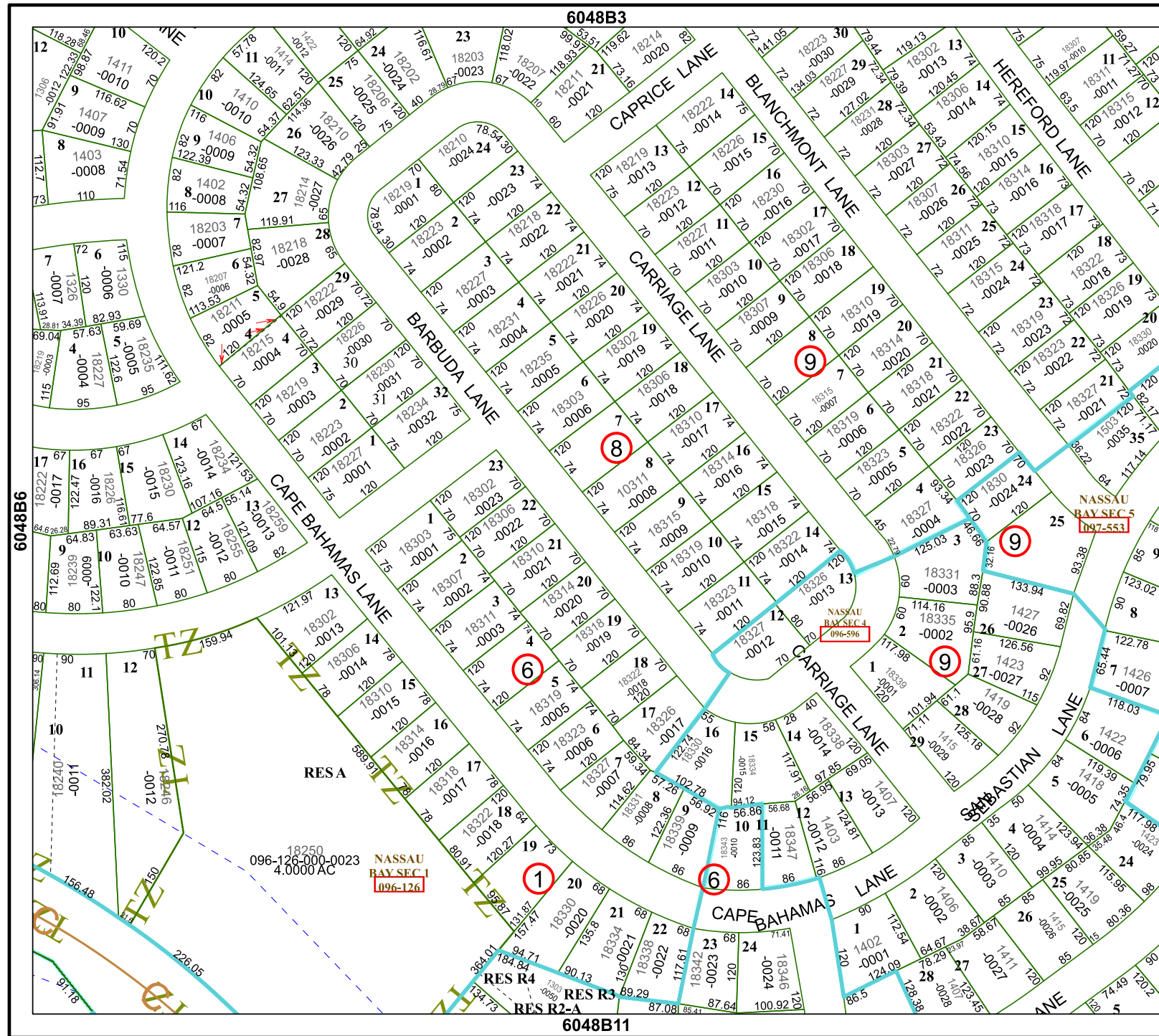


MAP LOCATION



## FACET 6048B7

1	2	3	4	1
5	6	7	8	5
9	10	11	12	9



6048B3

6048B11

6048B6

6048B8

096-126-000-0023  
4.0000 AC  
NASSAU BAY SEC 1  
096-126

NASSAU BAY SEC 4  
096-596

NASSAU BAY SEC 5  
097-553