

# Harris Central Appraisal District



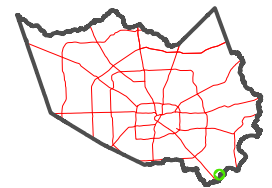
0 45 90 180 Feet

PUBLICATION DATE: 1/4/2023

Geospatial or map data maintained by the Harris Central Appraisal District is for informational purposes and may not have been prepared for or be suitable for legal, engineering, or surveying purposes. It does not represent an on-the-ground survey and only represents the approximate location of property boundaries.



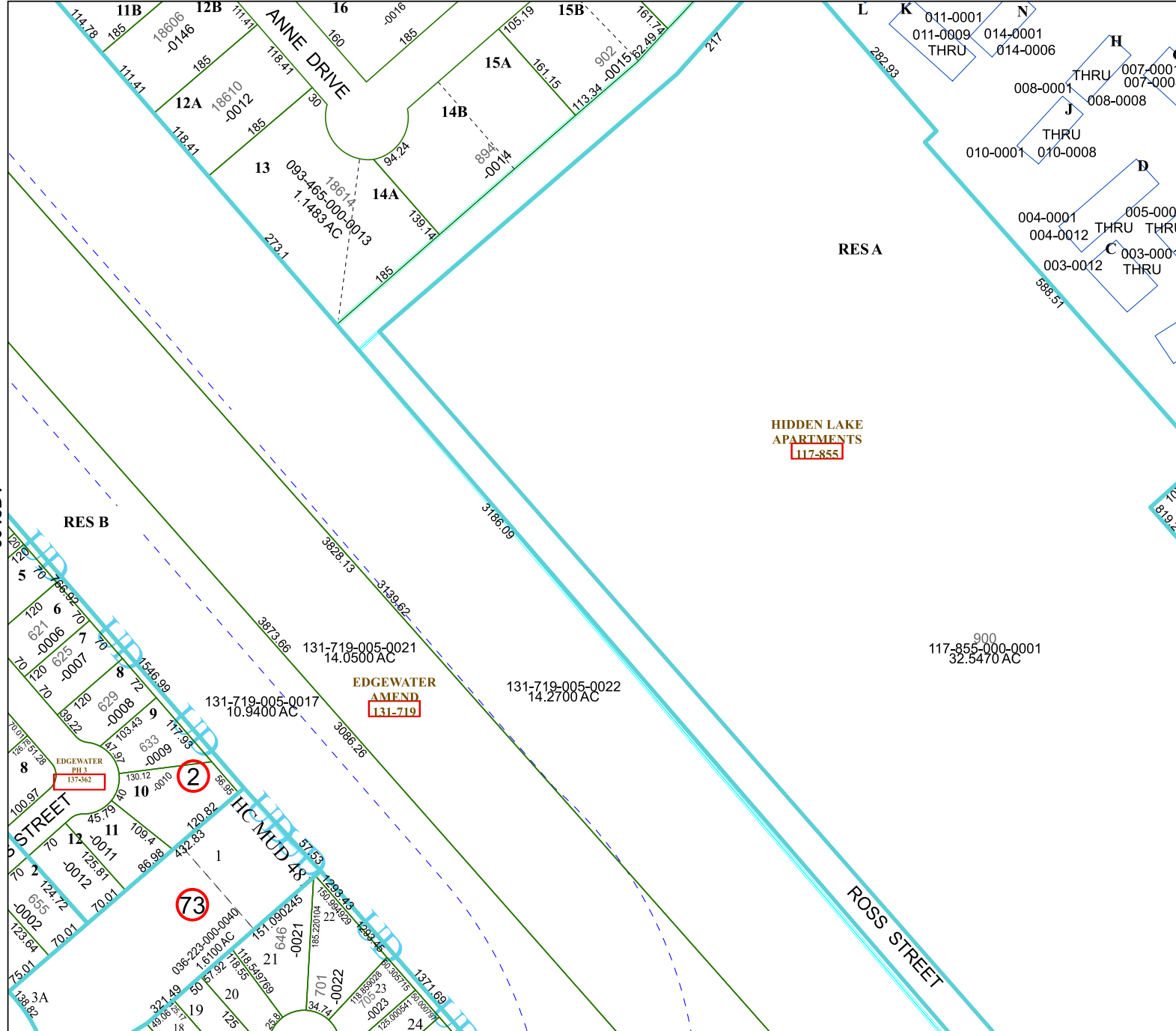
## MAP LOCATION



## FACET 6048D2

12	9	10	11	12
4	1	2	3	4
8	5	6	7	8

6048B10



6048D6

6048D1

6048D3

RESA

RES B

HIDDEN LAKE APARTMENTS  
117-855

EDGEWATER AMEND  
131-719

117-855-000-0001  
32.5470 AC

73

2

ROSS STREET

ANNE DRIVE

STREET

BIC MUD 48