

# Harris Central Appraisal District

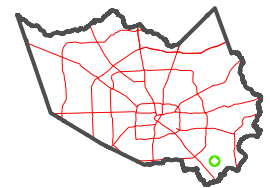


0 45 90 180 Feet

PUBLICATION DATE: 1/4/2023

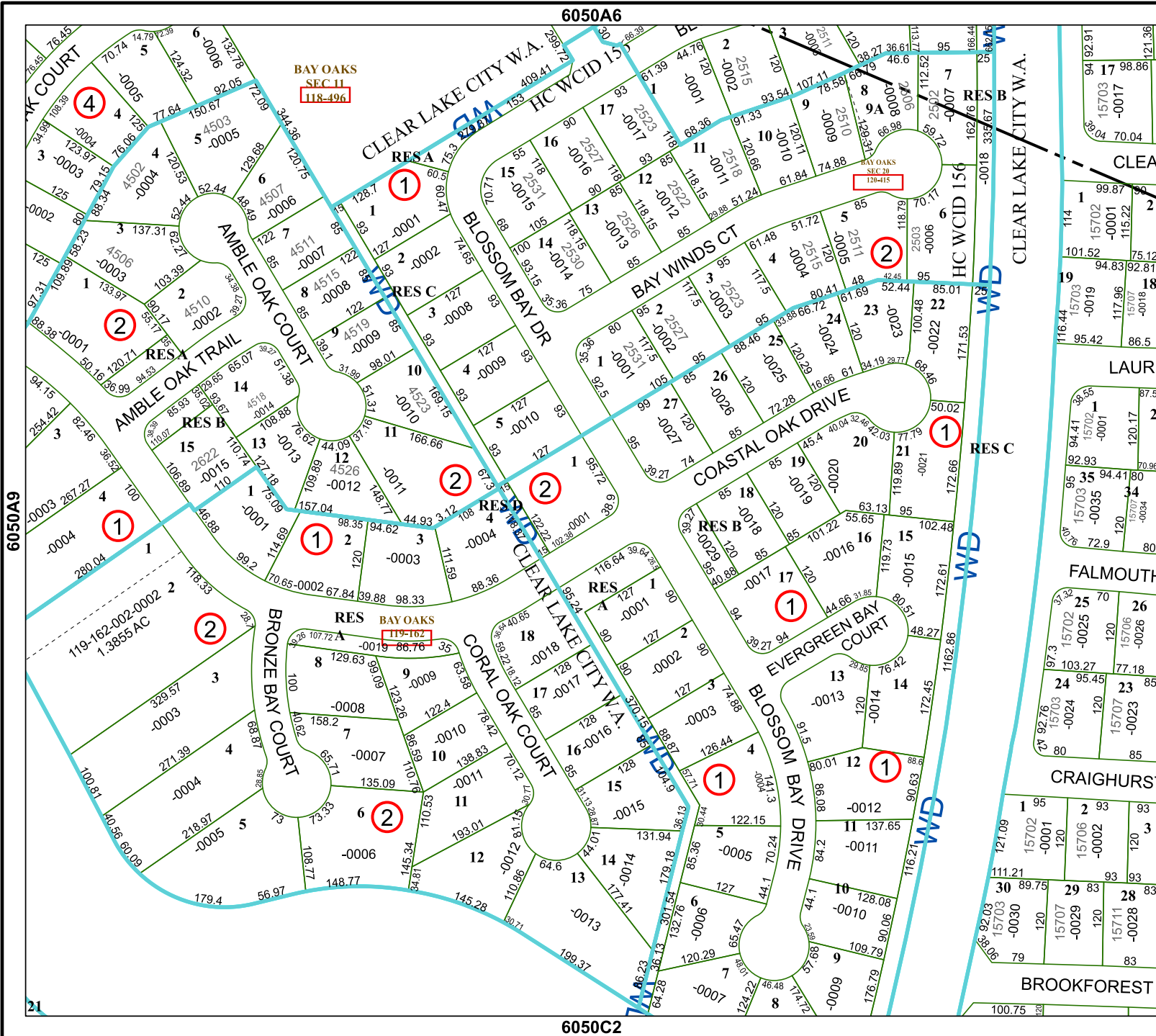
Geospatial or map data maintained by the Harris Central Appraisal District is for informational purposes and may not have been prepared for or be suitable for legal, engineering, or surveying purposes. It does not represent an on-the-ground survey and only represents the approximate location of property boundaries.

MAP LOCATION



## FACET 6050A10

8	5	6	7	8
12	9	10	11	12
4	1	2	3	4



BAY OAKS  
SEC 11  
118-496

BAY OAKS  
SEC 28  
120-415

BAY OAKS  
119-162

6050A6

6050C2

6050A9

6050A11

21