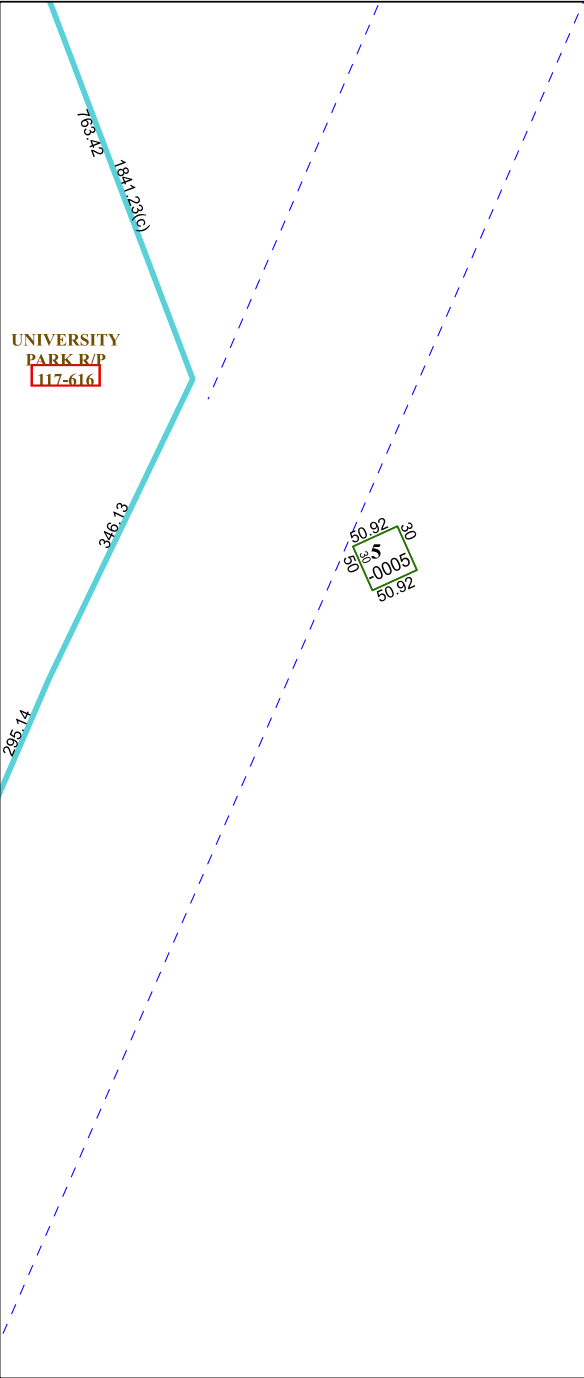


6050B4



UNIVERSITY
PARK R/P
117-616

50.92
50.92
10005
50.92

1K

6050B12

Harris Central Appraisal District



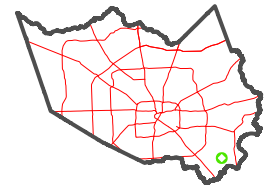
0 45 90 180
Feet

PUBLICATION DATE:
1/4/2023

Geospatial or map data maintained by the Harris Central Appraisal District is for informational purposes and may **not** have been prepared for or be suitable for legal, engineering, or surveying purposes. It does **not** represent an on-the-ground survey and only represents the approximate location of property boundaries.



MAP LOCATION



FACET 6050B8

2	3	4	1	2
6	7	8	5	6
10	11	12	9	10

6050B7

6150A5