

# Harris Central Appraisal District

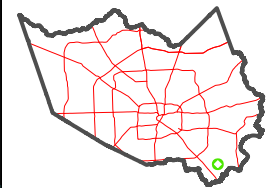


0 45 90 180 Feet

PUBLICATION DATE: 1/4/2023

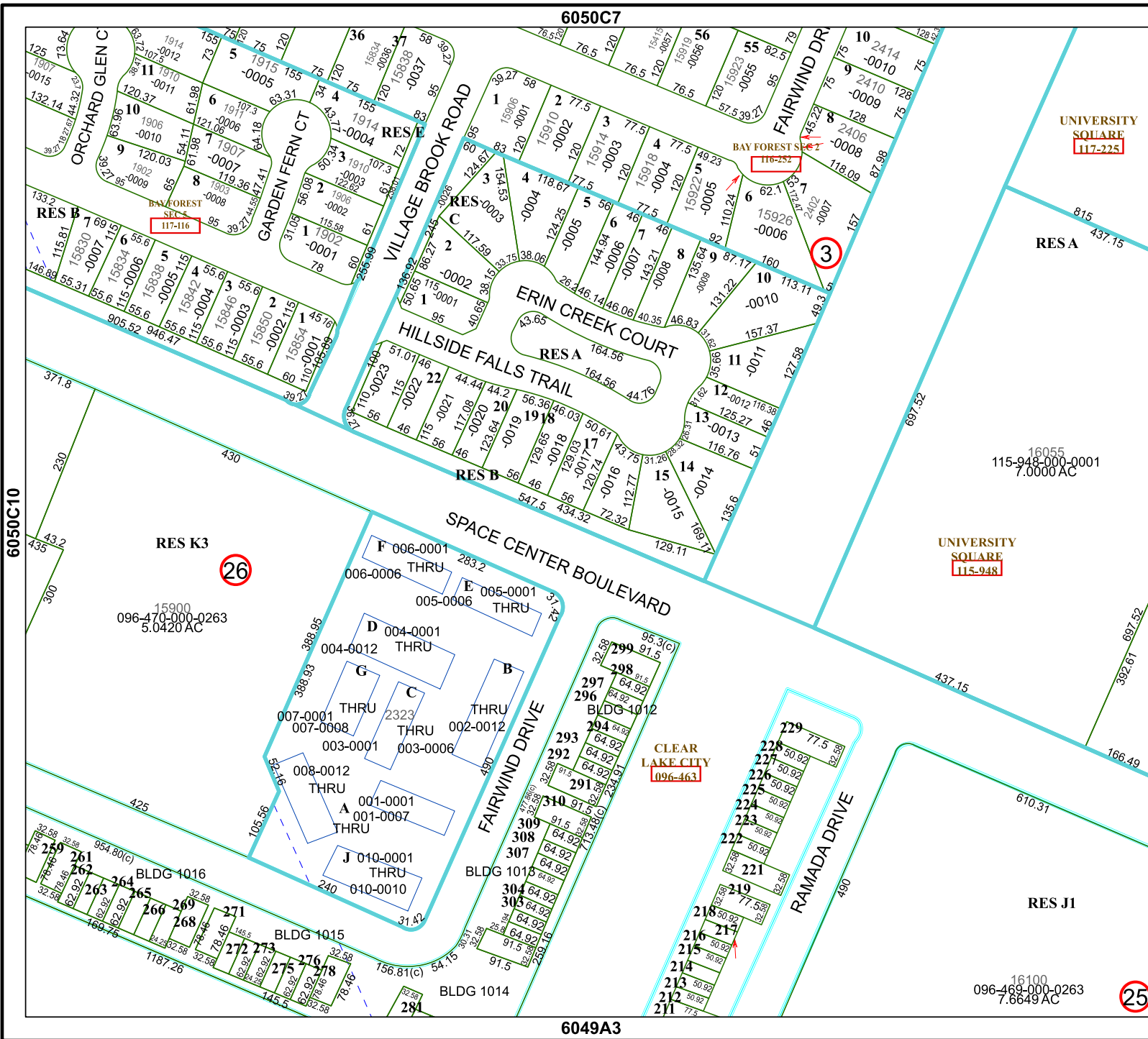
Geospatial or map data maintained by the Harris Central Appraisal District is for informational purposes and may not have been prepared for or be suitable for legal, engineering, or surveying purposes. It does not represent an on-the-ground survey and only represents the approximate location of property boundaries.

## MAP LOCATION



# FACET 6050C11

5	6	7	8	5
9	10	11	12	9
1	2	3	4	1



UNIVERSITY SQUARE  
117-225

RES A 437.15

16055  
115-948-000-0001  
7.0000 AC

UNIVERSITY SQUARE  
115-948

CLEAR LAKE CITY  
096-463

RES J1

16100  
096-469-000-0263  
7.6649 AC

6050C10

6050C12

6050C7

6049A3

26

25

