

# Harris Central Appraisal District

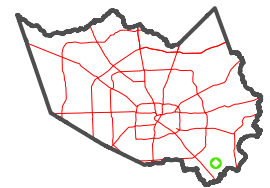


0 45 90 180 Feet

PUBLICATION DATE:  
1/4/2023

Geospatial or map data maintained by the Harris Central Appraisal District is for informational purposes and may not have been prepared for or be suitable for legal, engineering, or surveying purposes. It does not represent an on-the-ground survey and only represents the approximate location of property boundaries.

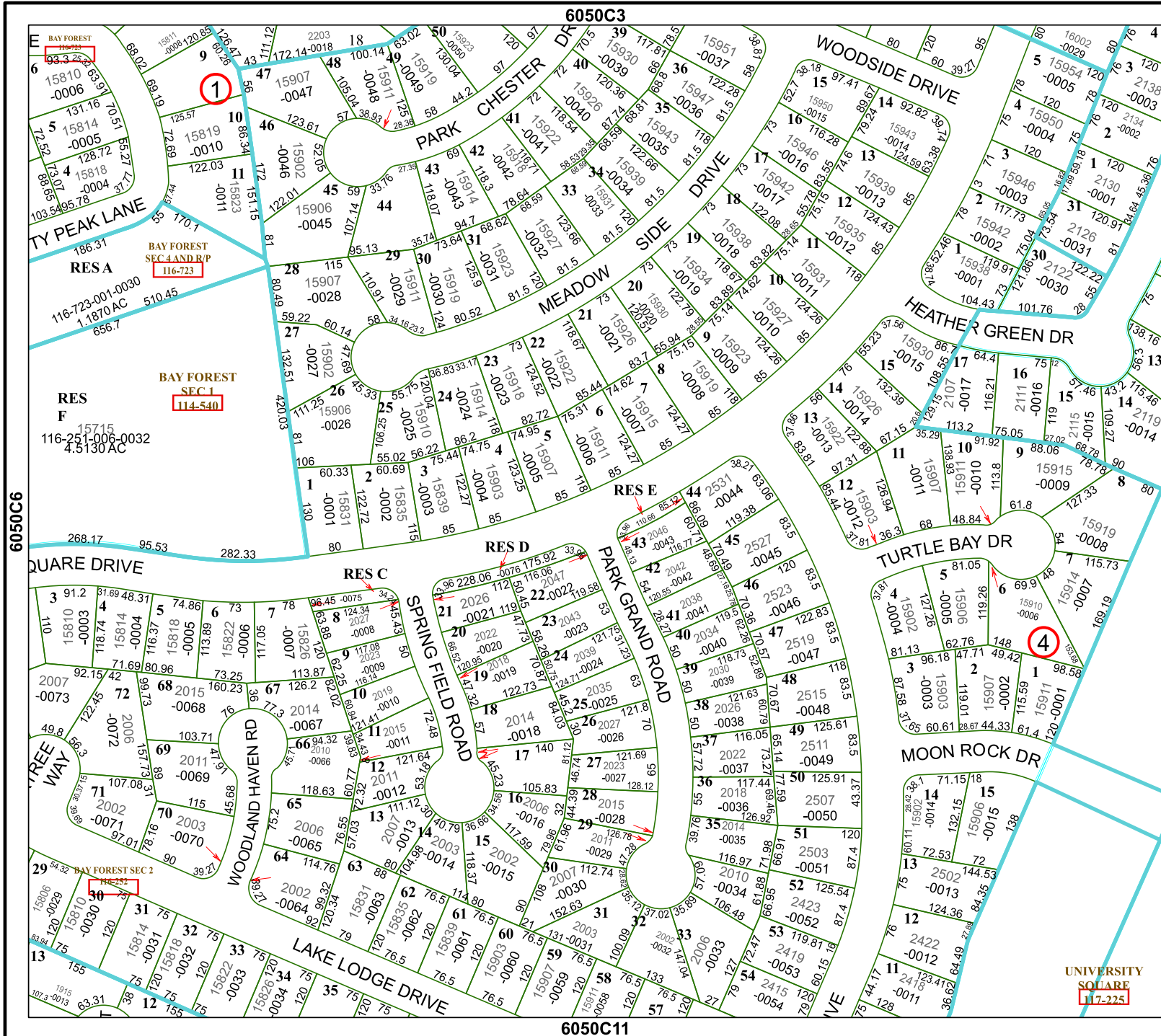
MAP LOCATION



## FACET 6050C7

1	2	3	4	1
5	6	7	8	5
9	10	11	12	9

UNIVERSITY  
SQUARE  
117-225



6050C3

6050C11

6050C6

6050C8