

# Harris Central Appraisal District



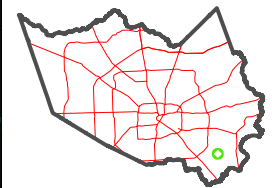
0 45 90 180 Feet

PUBLICATION DATE: 1/4/2023

Geospatial or map data maintained by the Harris Central Appraisal District is for informational purposes and may not have been prepared for or be suitable for legal, engineering, or surveying purposes. It does not represent an on-the-ground survey and only represents the approximate location of property boundaries.



MAP LOCATION



## FACET 6051A7

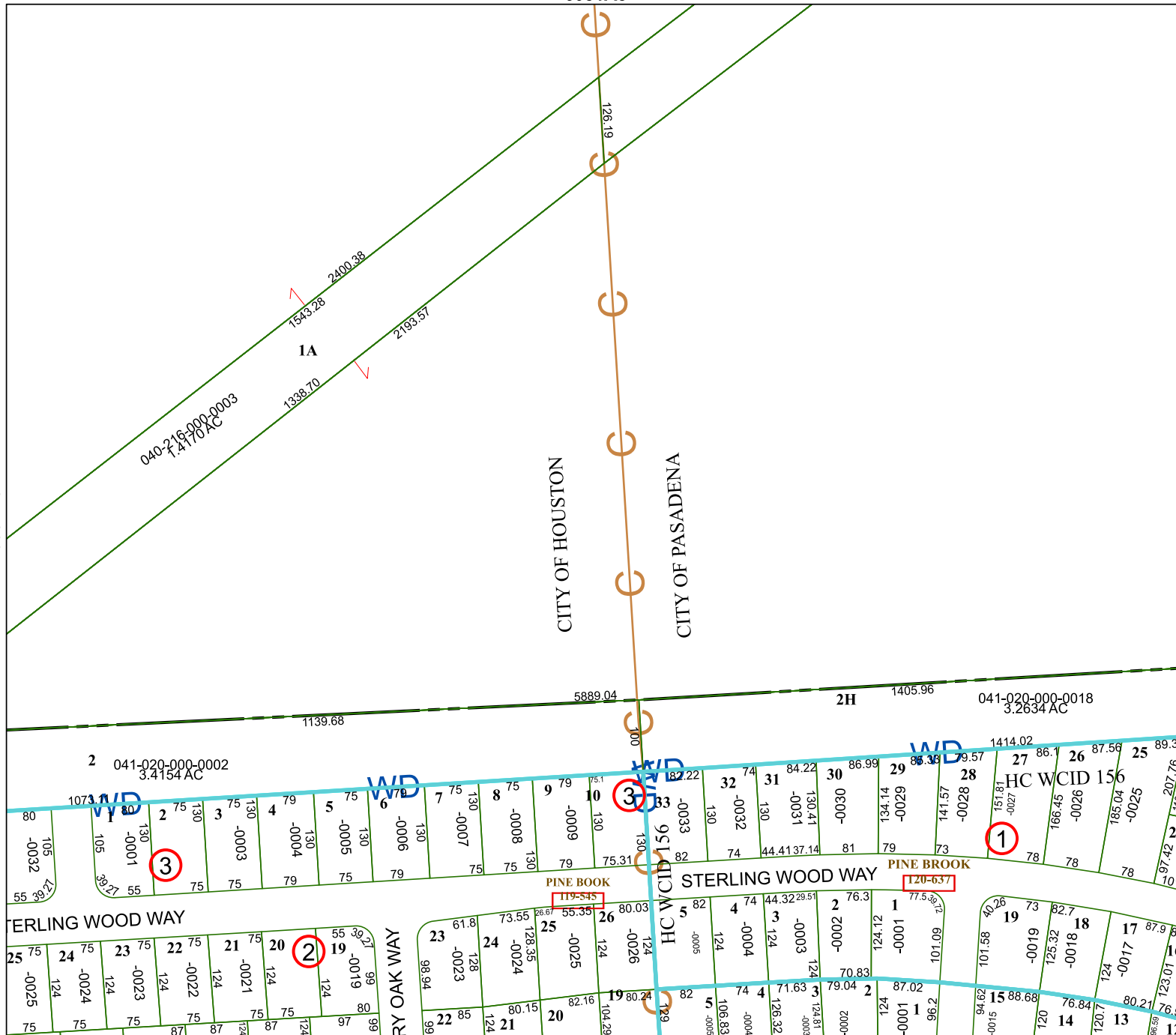
1	2	3	4	1
5	6	7	8	5
9	10	11	12	9

6051A3

6051A6

6051A8

CITY OF HOUSTON  
CITY OF PASADENA



6051A11