

Harris Central Appraisal District

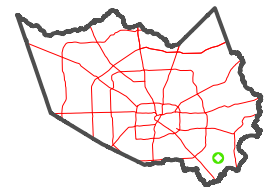


0 45 90 180 Feet

PUBLICATION DATE: 1/4/2023

Geospatial or map data maintained by the Harris Central Appraisal District is for informational purposes and may not have been prepared for or be suitable for legal, engineering, or surveying purposes. It does not represent an on-the-ground survey and only represents the approximate location of property boundaries.

MAP LOCATION

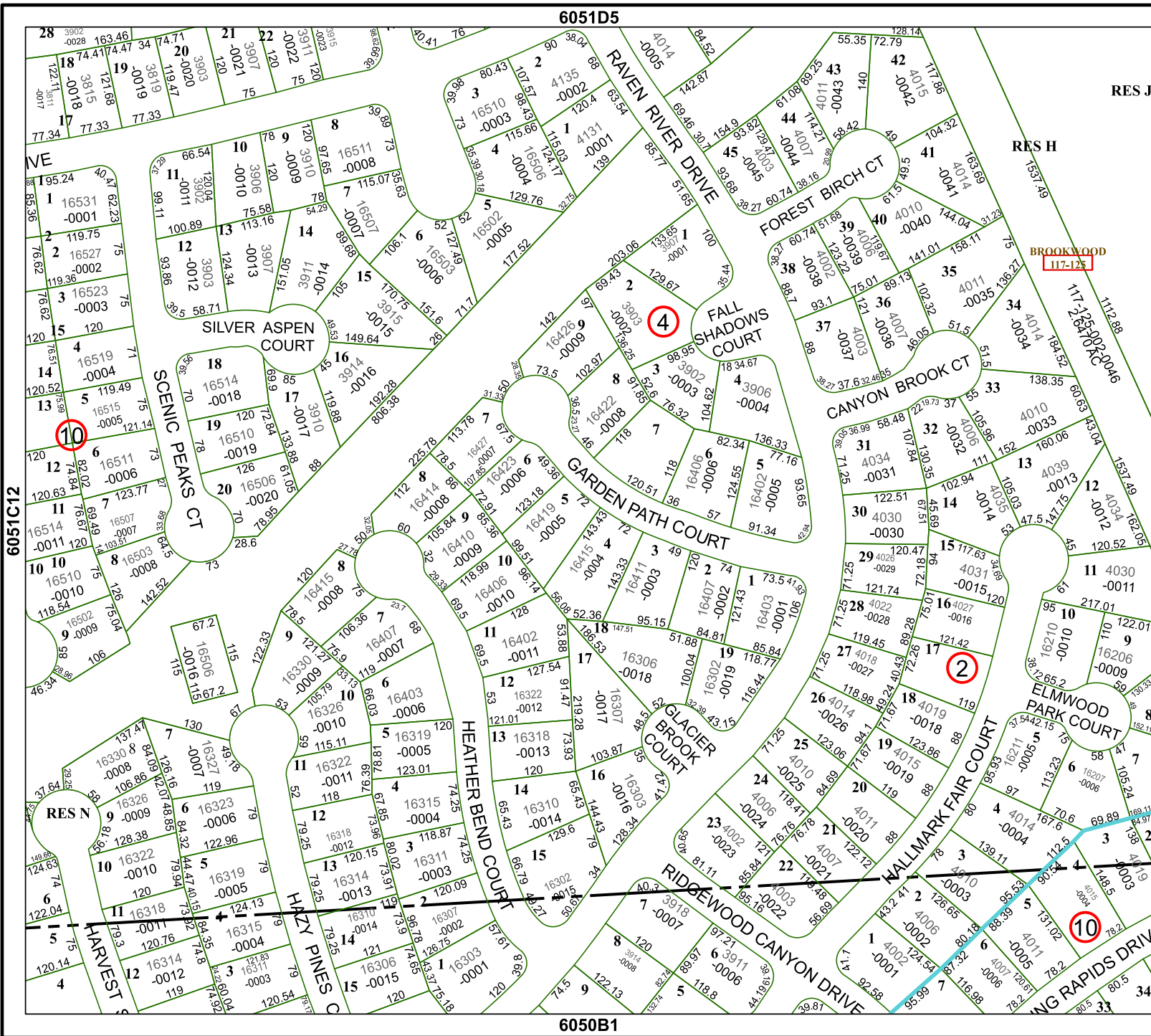


FACET 6051D9

7	8	5	6	7
11	12	9	10	11
3	4	1	2	3

6051D5

6050B1



RES J

RES H

BROOKWOOD 117-125

6051D10

6051C12

