

6052B5

LIGHT INDUSTRIAL
PARK AMEND
134-016

LIGHT INDUSTRIAL PARK
134-016

2

2411.08	1836.44	1980.37
1980.37	52.96	3427.03
49	-0162	88.44
70	210.5	
80	4693.2	
50	4703.39	
	348.24	2Q
	432.09	

Harris Central Appraisal District



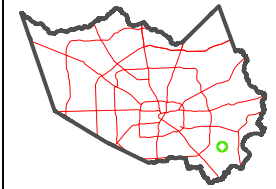
0 45 90 180 Feet

PUBLICATION DATE:
4/22/2024

Geospatial or map data maintained by the Harris Central Appraisal District is for informational purposes and may not have been prepared for or be suitable for legal, engineering, or surveying purposes. It does not represent an on-the-ground survey and only represents the approximate location of property boundaries.



MAP LOCATION



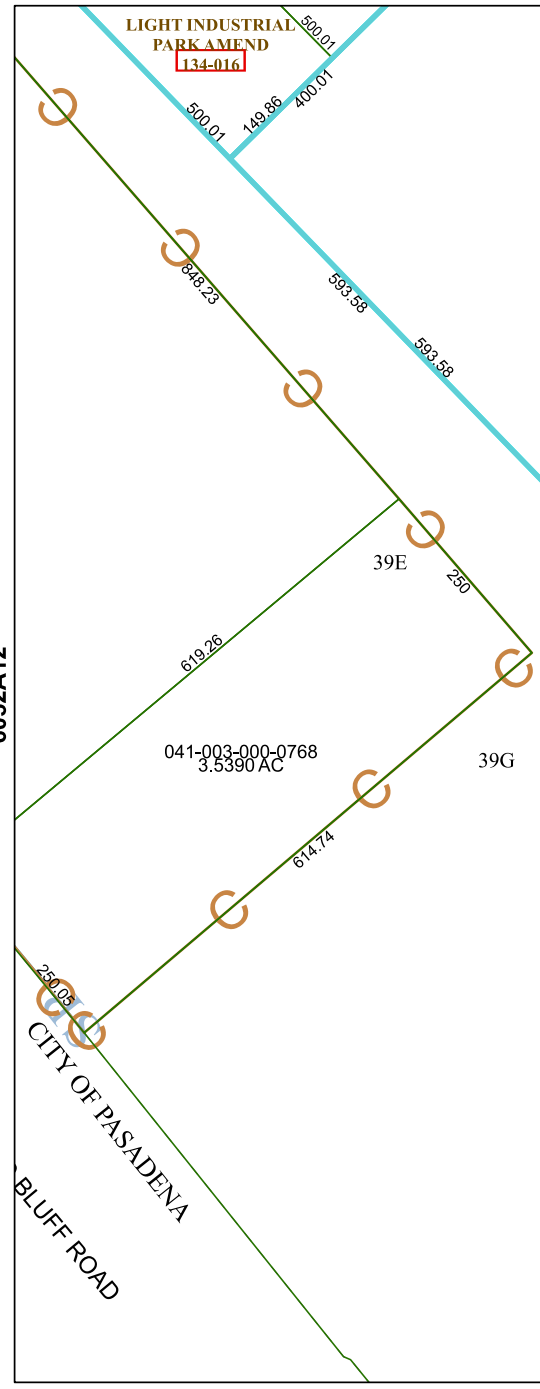
FACET 6052B9

7	8	5	6	7
11	12	9	10	11
3	4	1	2	3

6052D1

6052A12

6052B10



BLUFF ROAD
CITY OF PASADENA

041-003-000-0768
3.5390 AC

041-003-000-0783
30.5809 AC

041-003-000-0145
7.3876 AC

2M

39E

39G

619.26

614.74

250

593.58

593.58

878.23

500.01

149.86

400.01

791.63

1964.9

1207.21

189.98

1918.86

1585.33

1585.15

1207.21

1836.44

1980.37

4693.2

4703.39

348.24

432.09

70

80

50

49

52.96

59.96

1980.37

3427.03

88.44

210.5

4693.2

4703.39

348.24

432.09

70

80

50

49

52.96

59.96

1980.37

3427.03

88.44

210.5

4693.2

4703.39

348.24

432.09

70

80

50

49

52.96

59.96

1980.37

3427.03

88.44

210.5

4693.2

4703.39

348.24

432.09

70

80

50

49

52.96

59.96

1980.37

3427.03

88.44

210.5

4693.2

4703.39

348.24

432.09

70

80

50

49

52.96

59.96

1980.37

3427.03

88.44

210.5

4693.2

4703.39

348.24

432.09

70

80

50

49

52.96

59.96

1980.37

3427.03

88.44

210.5

4693.2

4703.39

348.24

432.09

70

80

50

49

52.96

59.96

1980.37

3427.03

88.44

210.5

4693.2

4703.39

348.24

432.09

70

80

50

49

52.96

59.96

1980.37

3427.03

88.44

210.5

4693.2

4703.39

348.24

432.09

70

80

50

49

52.96

59.96

1980.37

3427.03

88.44

210.5

4693.2

4703.39

348.24

432.09

70

80

50

49

52.96

59.96

1980.37

3427.03

88.44

210.5

4693.2

4703.39

348.24

432.09

70

80

50

49

52.96

59.96

1980.37

3427.03

88.44

210.5

4693.2

4703.39

348.24

432.09

70

80

50

49

52.96

59.96

1980.37

3427.03

88.44

210.5

4693.2

4703.39

348.24

432.09

70

80

50

49

52.96

59.96

1980.37

3427.03

88.44

210.5

4693.2

4703.39

348.24

432.09

70

80

50

49

52.96

59.96

1980.37

3427.03

88.44

210.5