

Harris Central Appraisal District



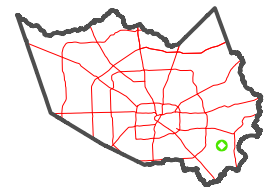
0 45 90 180 Feet

PUBLICATION DATE:
4/22/2024

Geospatial or map data maintained by the Harris Central Appraisal District is for informational purposes and may not have been prepared for or be suitable for legal, engineering, or surveying purposes. It does not represent an on-the-ground survey and only represents the approximate location of property boundaries.



MAP LOCATION



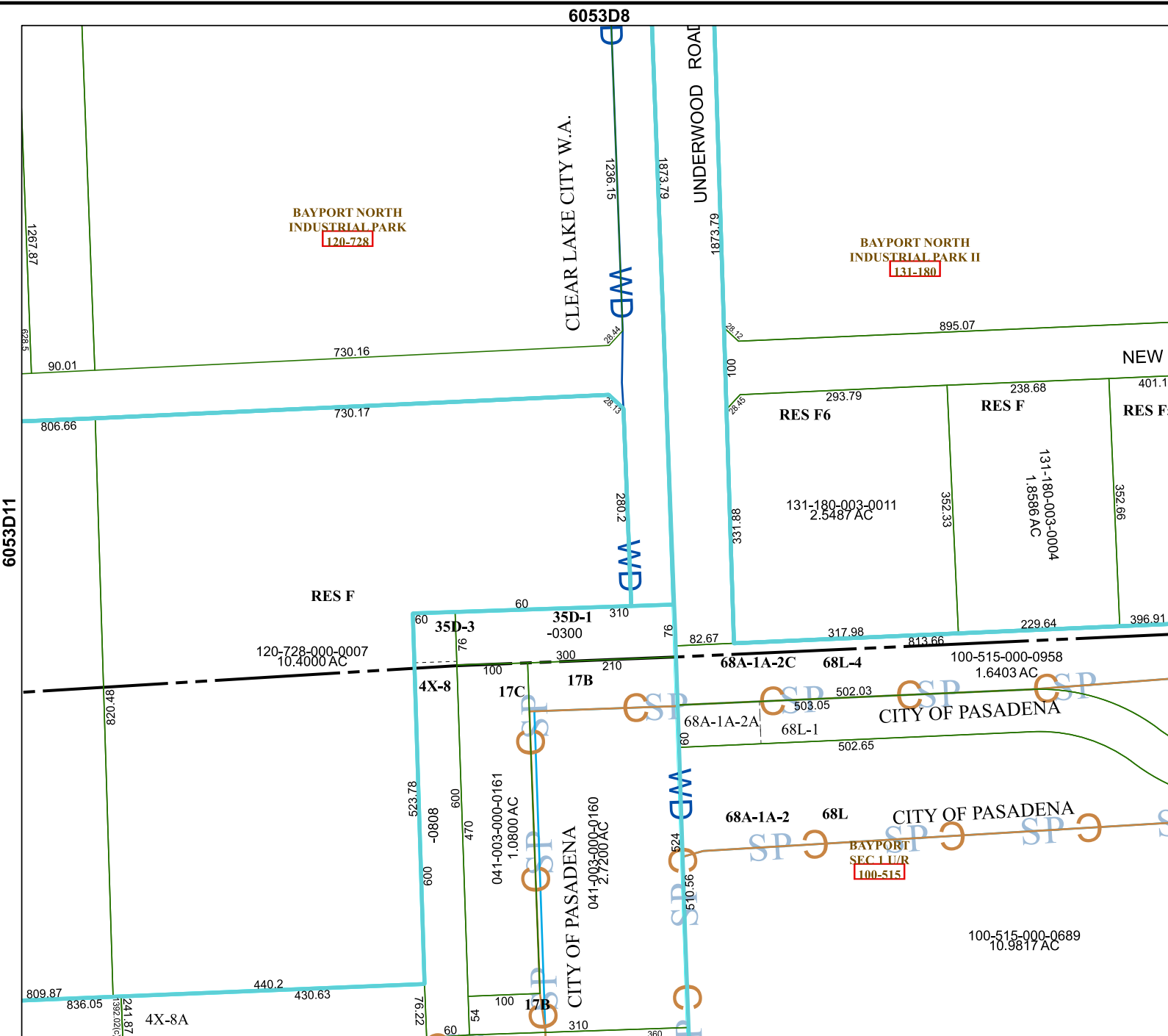
FACET

6053D12

6	7	8	5	6
10	11	12	9	10
2	3	4	1	2

6053D8

6052B4



6053D11

6153C

BAYPORT NORTH INDUSTRIAL PARK
120-728

BAYPORT NORTH INDUSTRIAL PARK II
131-180

BAYPORT SEC 111/R
100-515