

6053B10

Harris Central Appraisal District

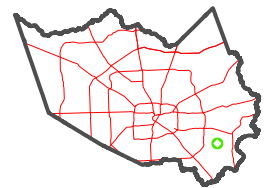


0 45 90 180 Feet

PUBLICATION DATE: 1/13/2025

Geospatial or map data maintained by the Harris Central Appraisal District is for informational purposes and may not have been prepared for or be suitable for legal, engineering, or surveying purposes. It does not represent an on-the-ground survey and only represents the approximate location of property boundaries.

MAP LOCATION



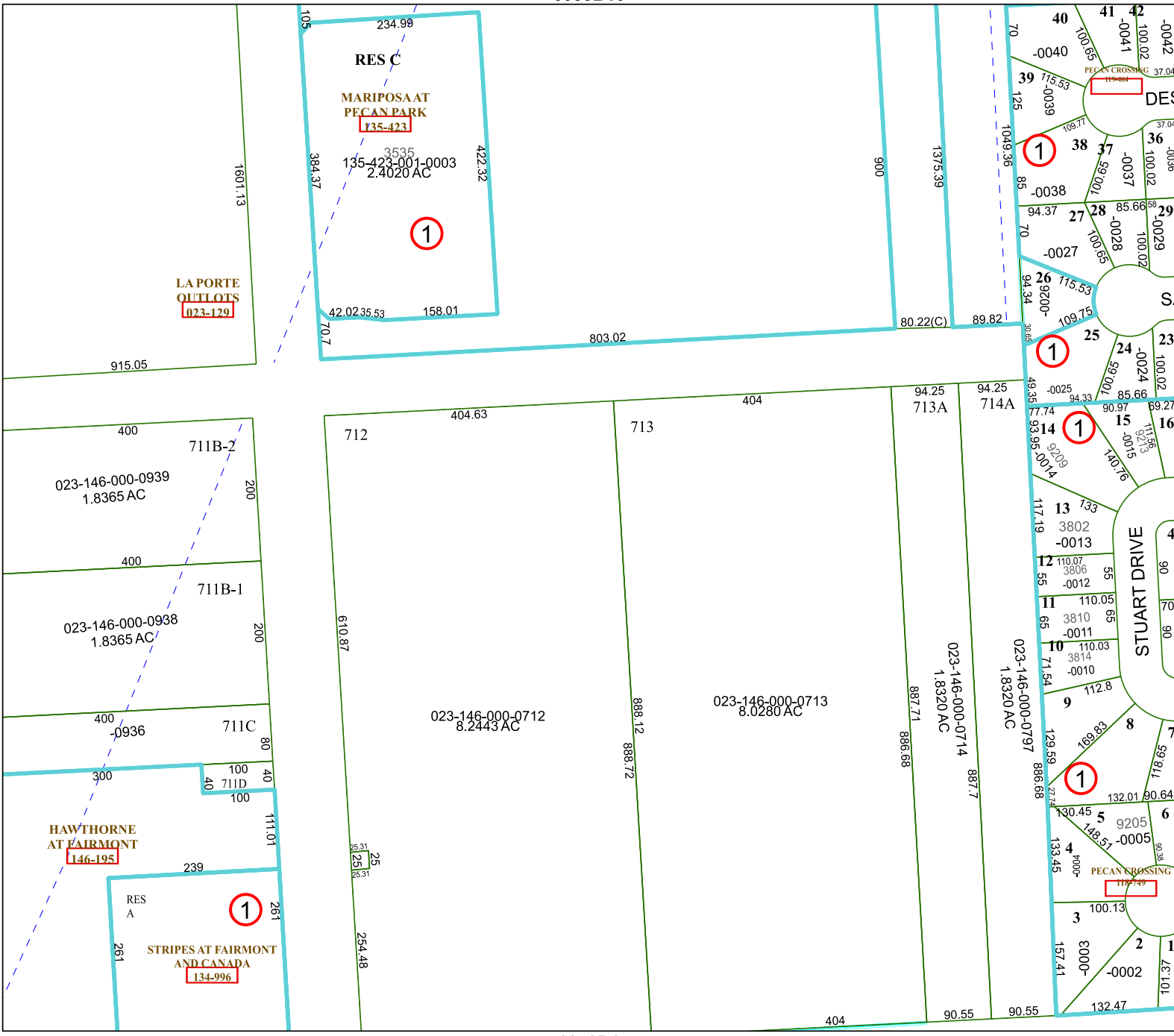
FACET 6053D2

12	9	10	11	12
4	1	2	3	4
8	5	6	7	8

6053D6

6053D1

6053D3



MARIPOSA AT
PECAN PARK
135-423

LA PORTE
OUTLOTS
023-129

HAWTHORNE
AT FAIRMONT
146-195

STRIPES AT FAIRMONT
AND CANADA
134-996

135-423-001-0003
2.4020 AC

023-146-000-0939
1.8365 AC

023-146-000-0938
1.8365 AC

023-146-000-0712
8.2443 AC

023-146-000-0713
8.0280 AC

023-146-000-0714
1.8320 AC

023-146-000-0714
1.8320 AC

023-146-000-0714
1.8320 AC

9205
149.57
133.45
100.13

PECAN CROSSING
119-749

STUART DRIVE

1601.13

200

200

80

40

111.01

261

610.87

25

31

25

254.48

254.48

422.32

158.01

803.02

404

712

713

888.12

888.72

404

900

1375.39

80.22(C)

89.82

94.25

94.25

713A

714A

887.71

886.88

887.7

70

1049.36

85

70

94.37

70

94.34

30.88

70

40

41

42

100.02

-0042

39

115.53

125

109.77

38

37

36

36

37

59.00

-0037

28

85.66

29

100.02

100.29

100.02

24

23

26

115.53

109.75

25

24

15

16

13

12

11

10

11

110.07

3806

-0012

11

3810

-0011

10

9

8

7

12

110.05

65

11

3814

-0010

10

9

8

7

6

13

133

3802

-0013

12

110.07

3806

-0012

11

10

9

14

93.95

-0014

13

133

3802

-0013

12

110.07

3806

-0012

15

90.97

89.27

16

15

111.58

9273

-0015

14

13

12

16

140.76

140.76

13

133

3802

-0013

12

110.07

3806

-0012

17

117.19

117.19

14

133

3802

-0013

12

110.07

3806

-0012

18

129.59

129.59

15

133

3802

-0013

12

110.07

3806

-0012

19

132.01

132.01

16

133

3802

-0013

12

110.07

3806

-0012

20

130.45

130.45

17

133

3802

-0013

12

110.07

3806

-0012

21

133.45

133.45

18

133

3802

-0013

12

110.07

3806

-0012

22

132.47

132.47

19

133

3802

-0013

12

110.07

3806

-0012

23

132.01

132.01

20

133

3802

-0013

12

110.07

3806

-0012

24

130.45

130.45

21

133

3802

-0013

12

110.07

3806

-0012

25

132.47

132.47

22

133

3802

-0013

12

110.07

3806

-0012

26

132.01

132.01

23

133

3802

-0013

12

110.07

3806

-0012

27

130.45

130.45

24

133

3802

-0013

12

110.07

3806

-0012

28

132.47

132.47

25

133

3802

-0013

12

110.07

3806

-0012

29

132.01

132.01

26

133

3802

-0013

12