

Harris Central Appraisal District

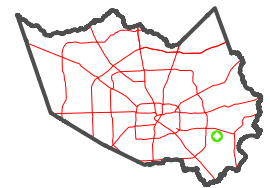


0 45 90 180 Feet

PUBLICATION DATE: 12/30/2023

Geospatial or map data maintained by the Harris Central Appraisal District is for informational purposes and may not be suitable for legal, engineering, or surveying purposes. It does not represent an on-the-ground survey and only represents the approximate location of property boundaries.

MAP LOCATION

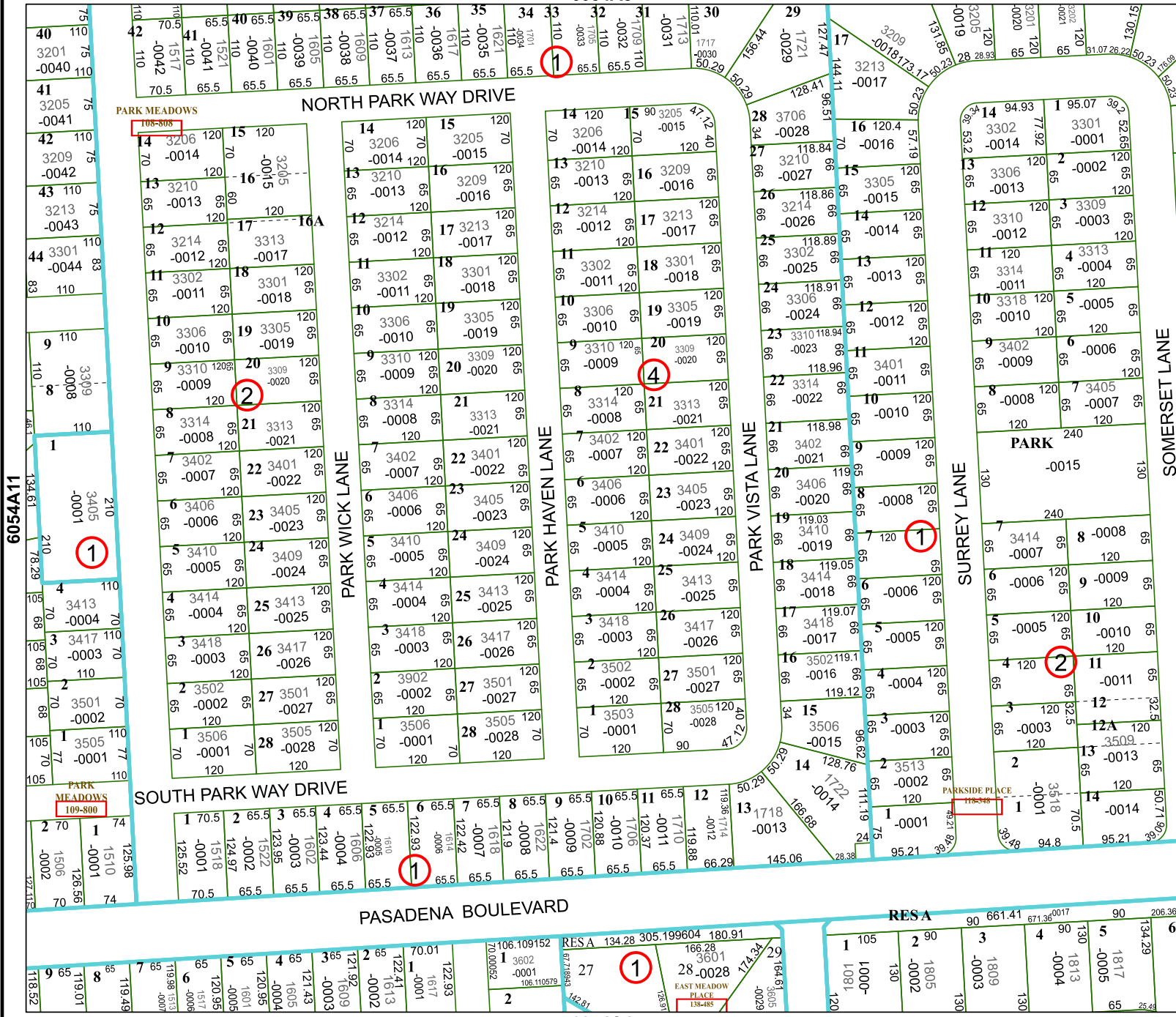


FACET 6054A12

6	7	8	5	6
10	11	12	9	10
2	3	4	1	2

6054A8

6054C4



PARK MEADOWS 108-808

PARK MEADOWS 109-800

6054A11

6054B9

