

Harris Central Appraisal District



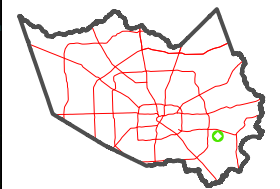
0 45 90 180 Feet

PUBLICATION DATE: 1/13/2025

Geospatial or map data maintained by the Harris Central Appraisal District is for informational purposes and may not have been prepared for or be suitable for legal, engineering, or surveying purposes. It does not represent an on-the-ground survey and only represents the approximate location of property boundaries.

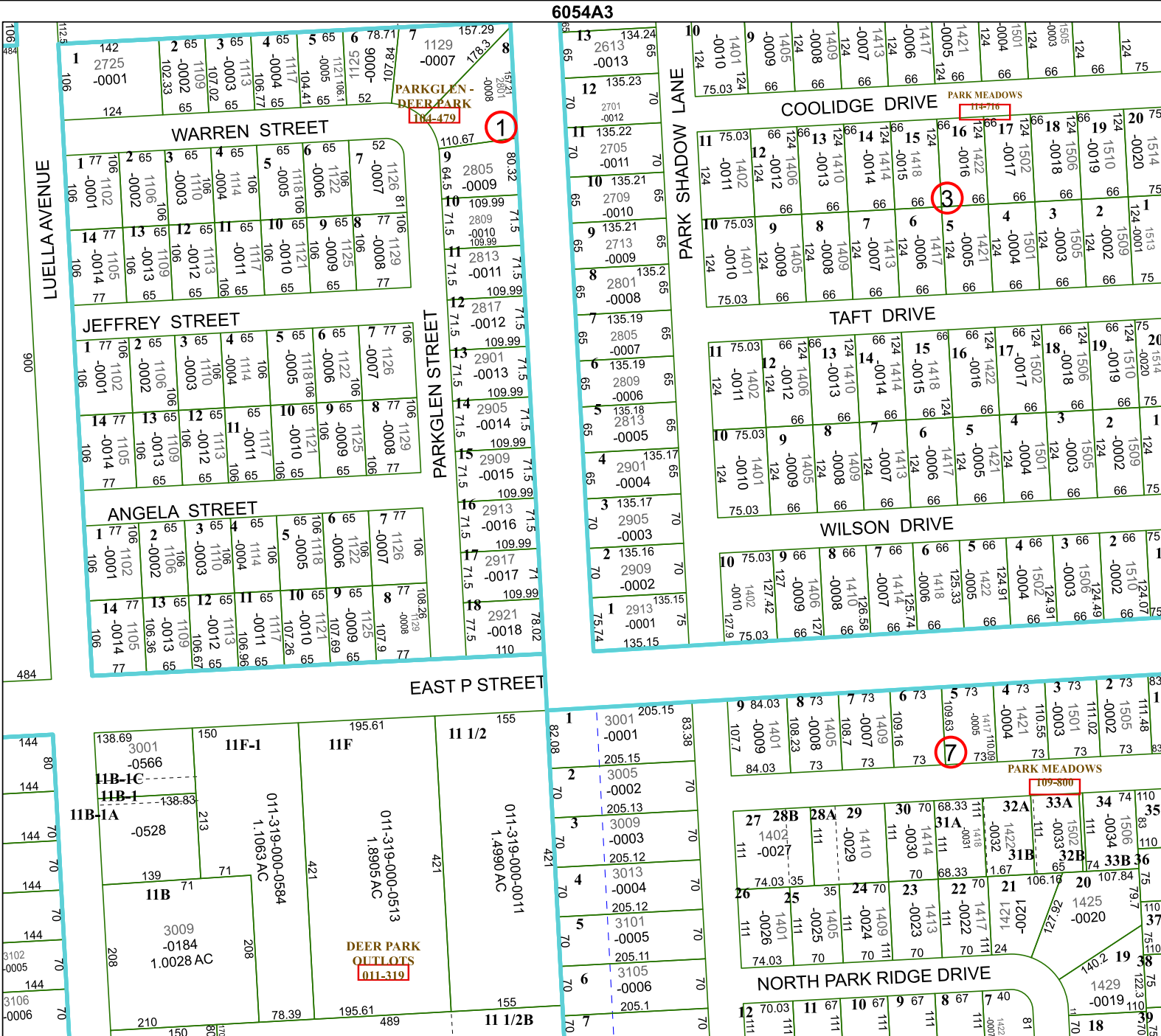


MAP LOCATION



FACET 6054A7

1	2	3	4	1
5	6	7	8	5
9	10	11	12	9



6054A3

6054A11

6054A7

6054A6

6054A6 (vertical label on the left edge of the map)