

6054B11

# Harris Central Appraisal District



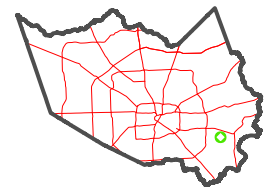
0 45 90 180 Feet

PUBLICATION DATE: 1/4/2023

Geospatial or map data maintained by the Harris Central Appraisal District is for informational purposes and may not have been prepared for or be suitable for legal, engineering, or surveying purposes. It does not represent an on-the-ground survey and only represents the approximate location of property boundaries.



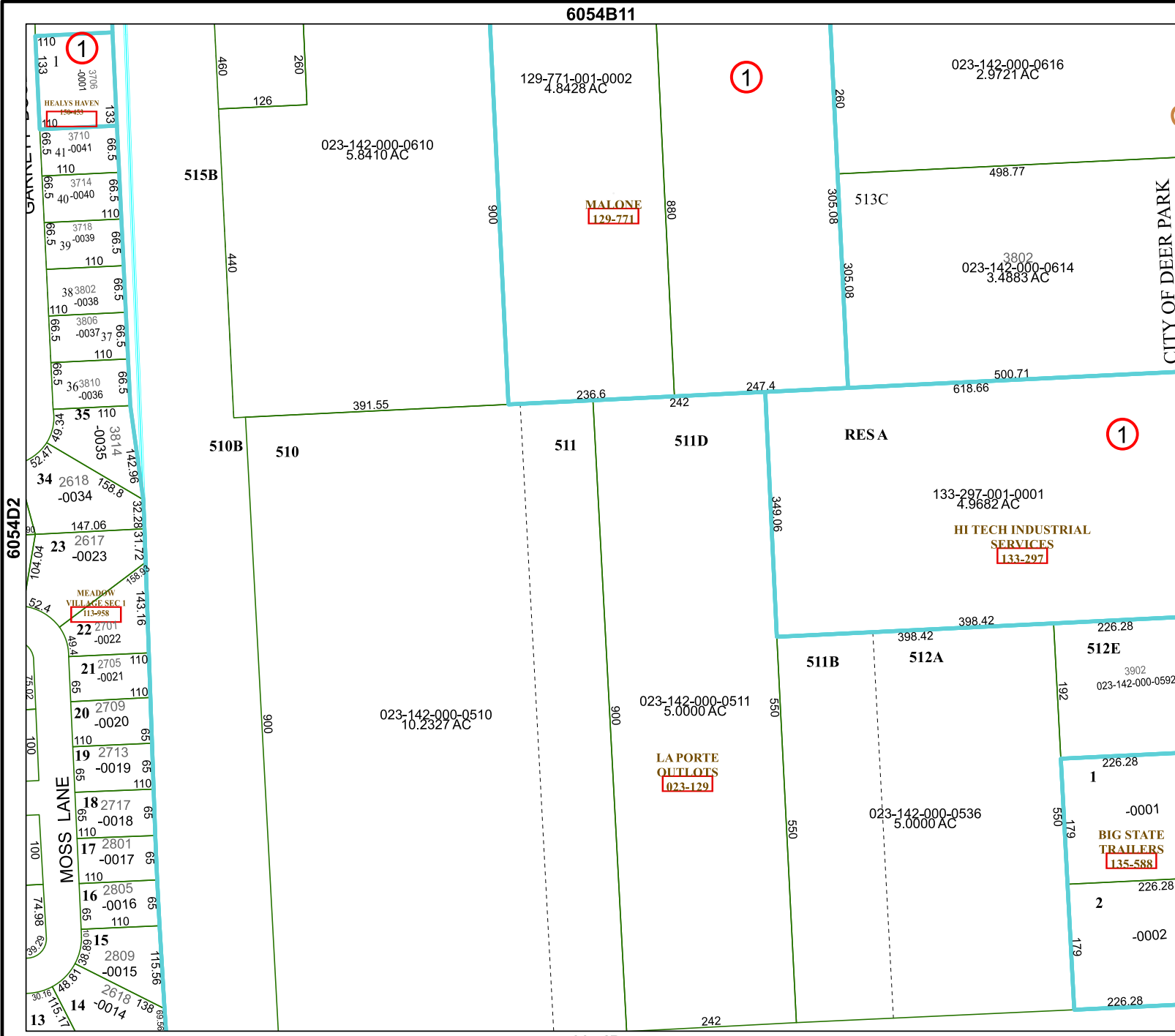
MAP LOCATION



## FACET 6054D3

9	10	11	12	9
1	2	3	4	1
5	6	7	8	5

6054D7



6054D2

6054D4

MOSS LANE

CITY OF DEER PARK

515B

510B

510

511

511D

RESA

511B

512A

512E

1

1

1