

6056C10

6055A1

Harris Central Appraisal District



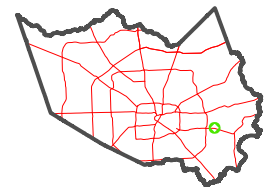
0 45 90 180 Feet

PUBLICATION DATE:
12/30/2023

Geospatial or map data maintained by the Harris Central Appraisal District is for informational purposes and may **not** have been prepared for or be suitable for legal, engineering, or surveying purposes. It does **not** represent an on-the-ground survey and only represents the approximate location of property boundaries.

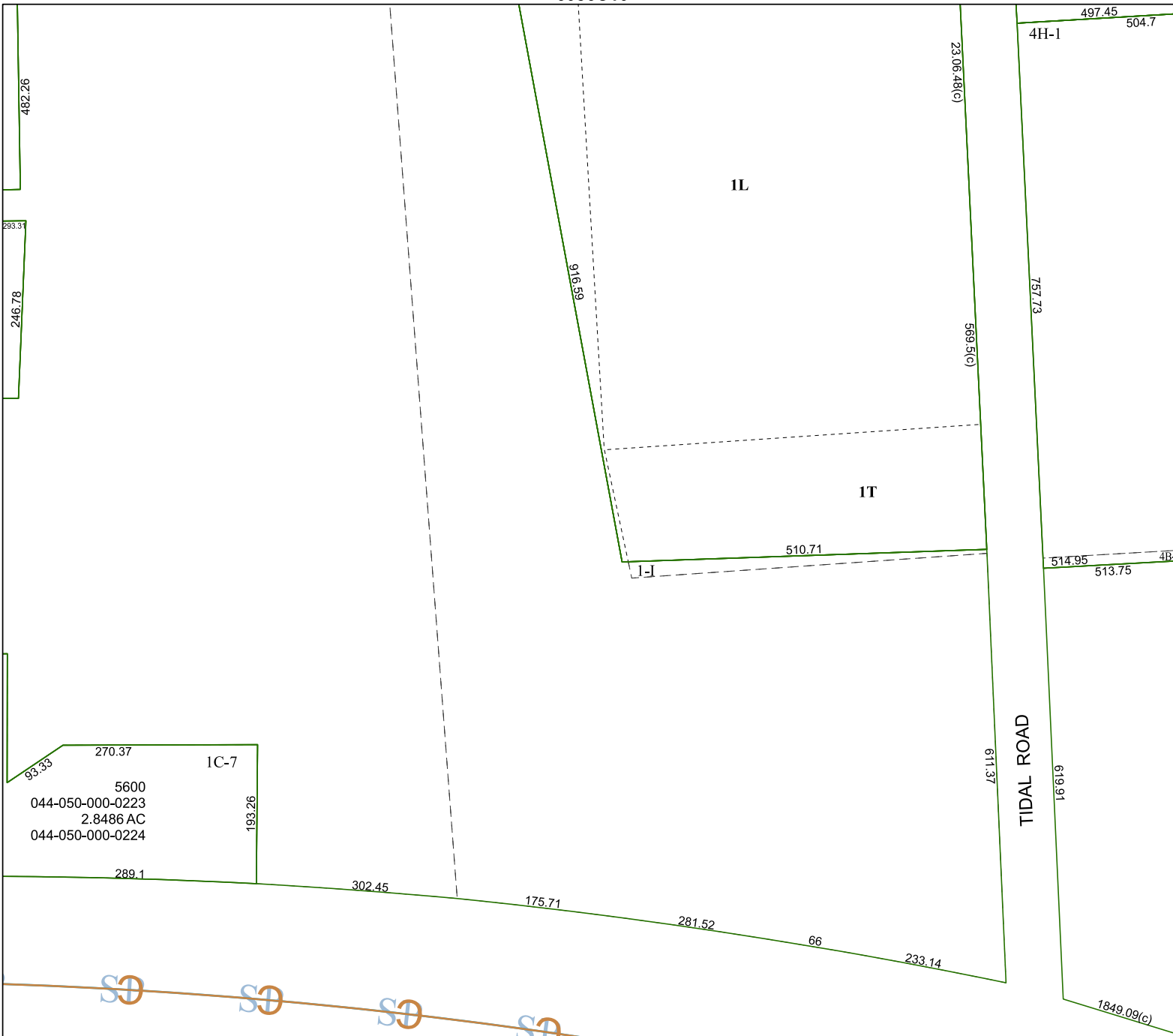


MAP LOCATION



FACET 6055A2

12	9	10	11	12
4	1	2	3	4
8	5	6	7	8



93.35 270.37 1C-7
 5600
 044-050-000-0223
 2.8486 AC
 044-050-000-0224
 289.1 193.26

6055A6