

6056D10

4A

CITY OF DEER PARK

1

MONUMENT
BUSINESS PARK
144-732

144-732-001-0002
25.2944 AC

Harris Central Appraisal District



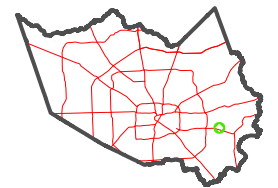
0 45 90 180
Feet

PUBLICATION DATE:
12/30/2023

Geospatial or map data maintained by the Harris Central Appraisal District is for informational purposes and may not have been prepared for or be suitable for legal, engineering, or surveying purposes. It does not represent an on-the-ground survey and only represents the approximate location of property boundaries.



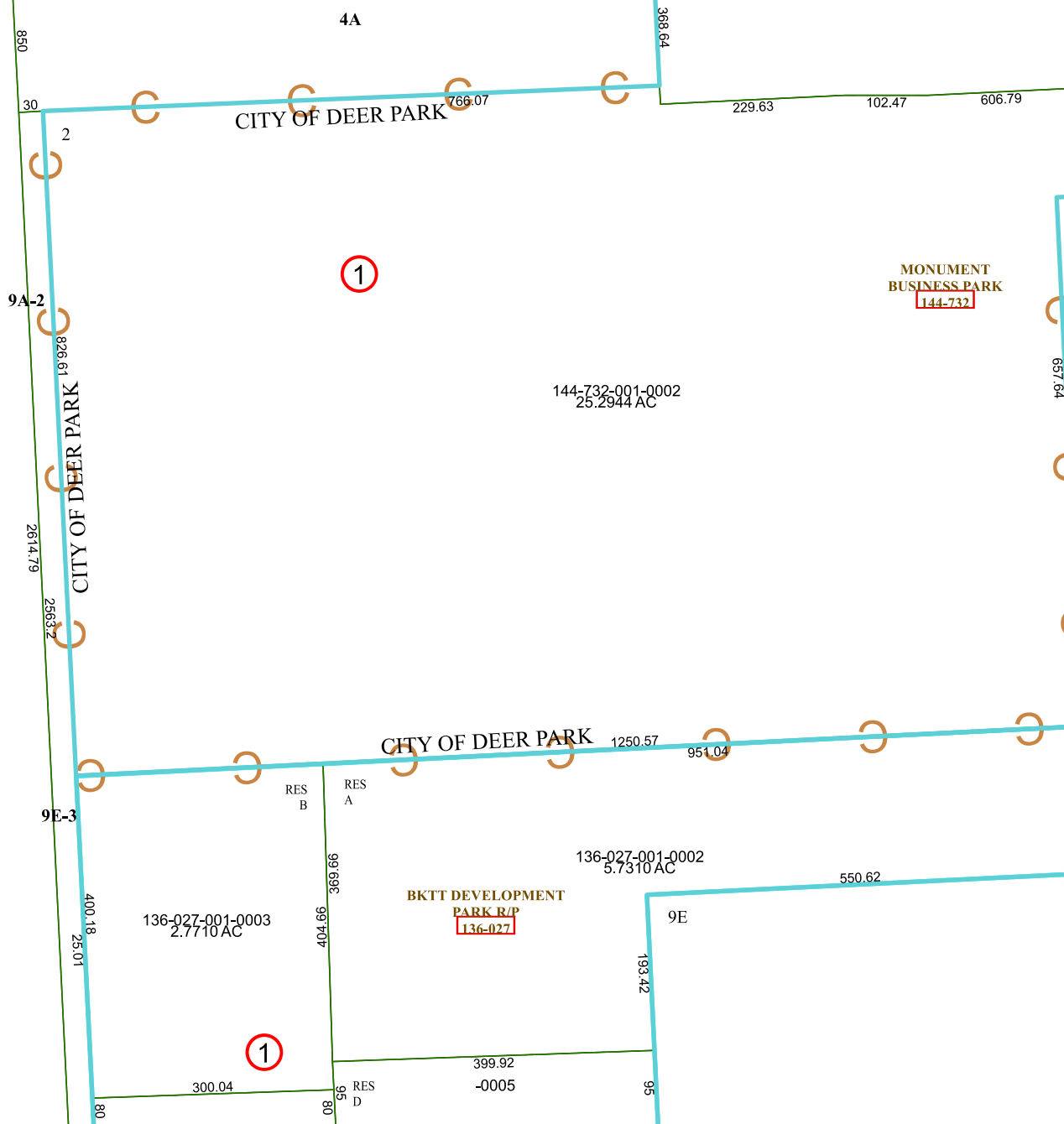
MAP LOCATION



FACET 6055B2

12	9	10	11	12
4	1	2	3	4
8	5	6	7	8

6055B6



6055B1

6055B3