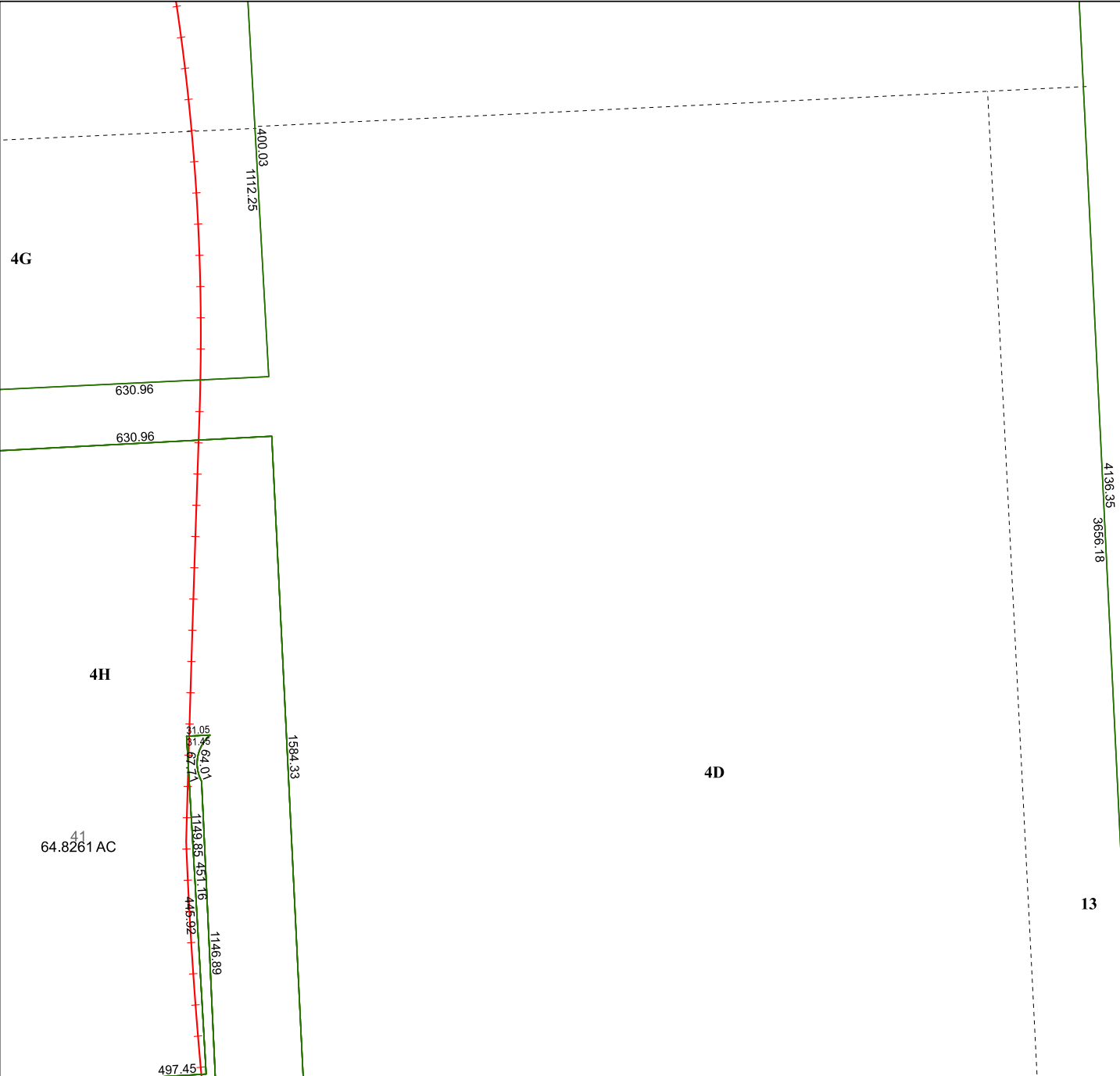


6056C7



6055A3

# Harris Central Appraisal District



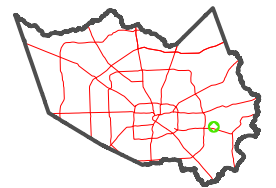
0 45 90 180  
Feet

PUBLICATION DATE:  
1/4/2023

Geospatial or map data maintained by the Harris Central Appraisal District is for informational purposes and may not have been prepared for or be suitable for legal, engineering, or surveying purposes. It does not represent an on-the-ground survey and only represents the approximate location of property boundaries.



## MAP LOCATION



# FACET 6056C11

5	6	7	8	5
9	10	11	12	9
1	2	3	4	1

6056C10

6056C12

13

4D

4G

4H

64.8261 AC