

6056C5

Harris Central Appraisal District



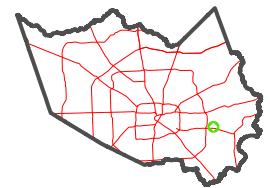
0 45 90 180 Feet

PUBLICATION DATE:
12/30/2023

Geospatial or map data maintained by the Harris Central Appraisal District is for informational purposes and may not have been prepared for or be suitable for legal, engineering, or surveying purposes. It does not represent an on-the-ground survey and only represents the approximate location of property boundaries.



MAP LOCATION



FACET 6056C9

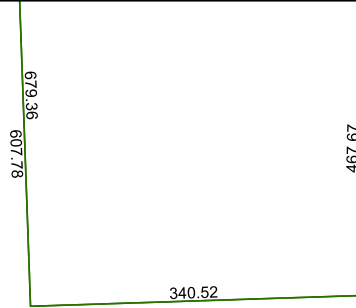
7	8	5	6	7
11	12	9	10	11
3	4	1	2	3

5956D12

-0243

IC-17
46.5
46.5

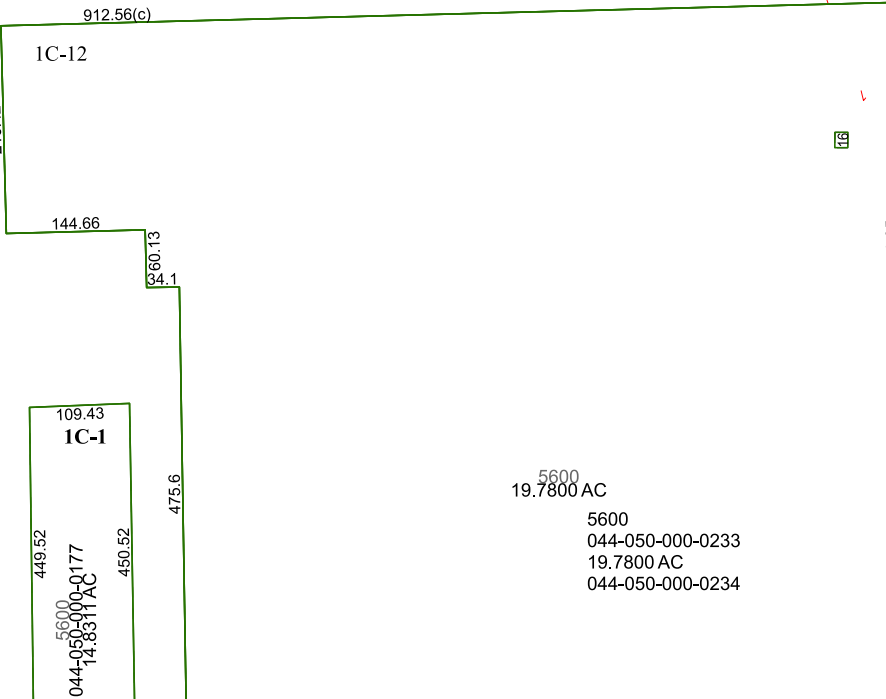
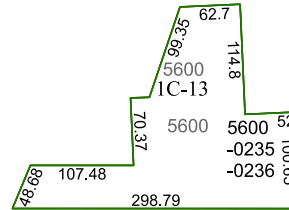
927.709



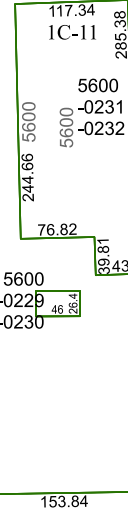
IC-16
-0241
64

91.2
112.35
5600
-0239
91.2 112.34

143.7
IC-14
5600
5600
110.59
-0237 143.7
-0238



6055A1



6056C10