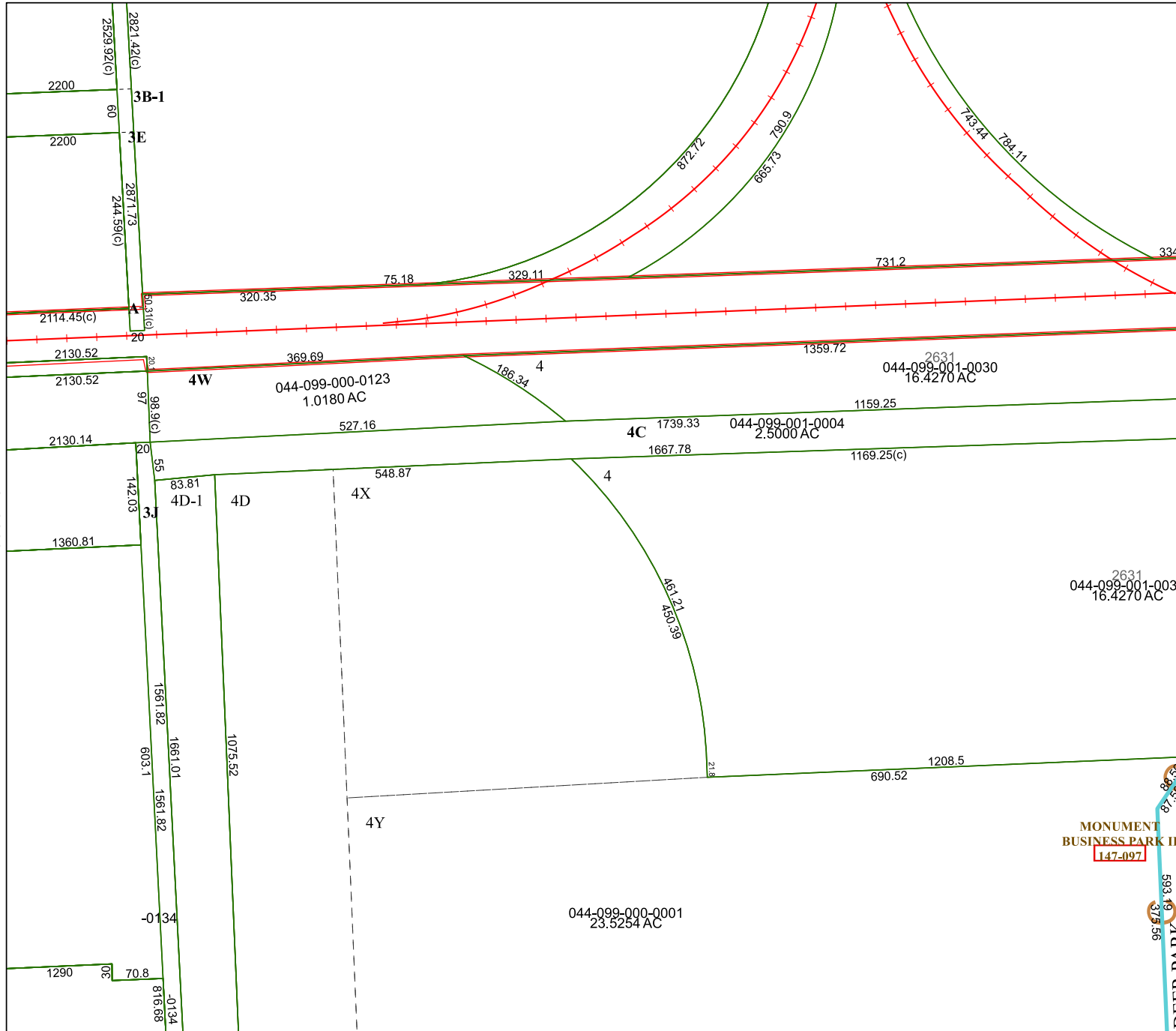


6056D2



6056D10

# Harris Central Appraisal District

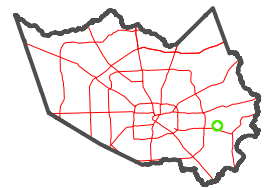


0 45 90 180 Feet

PUBLICATION DATE:  
12/30/2023

Geospatial or map data maintained by the Harris Central Appraisal District is for informational purposes and may **not** have been prepared for or be suitable for legal, engineering, or surveying purposes. It does **not** represent an on-the-ground survey and only represents the approximate location of property boundaries.

## MAP LOCATION



# FACET 6056D6

4	1	2	3	4
8	5	6	7	8
12	9	10	11	12

6056D5

6056D7

MONUMENT  
BUSINESS PARK II  
147-097

DEER PARK  
61 563  
61 566