

6058D12

Harris Central Appraisal District



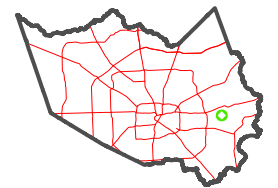
0 45 90 180 Feet

PUBLICATION DATE: 1/4/2023

Geospatial or map data maintained by the Harris Central Appraisal District is for informational purposes and may not have been prepared for or be suitable for legal, engineering, or surveying purposes. It does not represent an on-the-ground survey and only represents the approximate location of property boundaries.



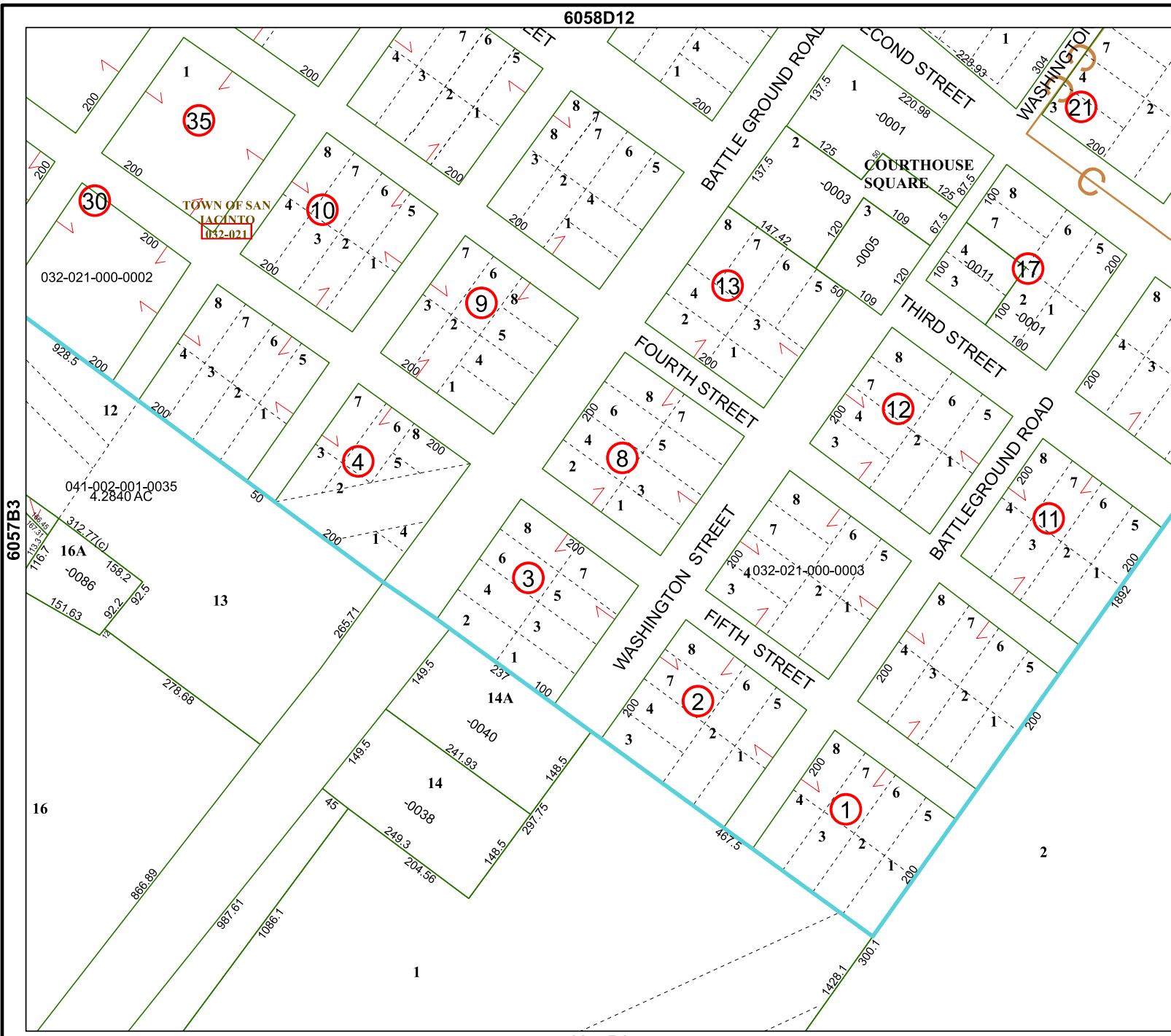
MAP LOCATION



FACET 6057B4

10	11	12	9	10
2	3	4	1	2
6	7	8	5	6

6057B8



TOWN OF SAN LACINTO 032-021

032-021-000-0002

041-002-001-0035 4.2840 AC

6057B3

6157A1