

Harris Central Appraisal District



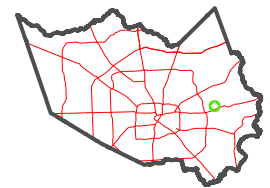
0 45 90 180 Feet

PUBLICATION DATE:
2/13/2024

Geospatial or map data maintained by the Harris Central Appraisal District is for informational purposes and may not have been prepared for or be suitable for legal, engineering, or surveying purposes. It does not represent an on-the-ground survey and only represents the approximate location of property boundaries.

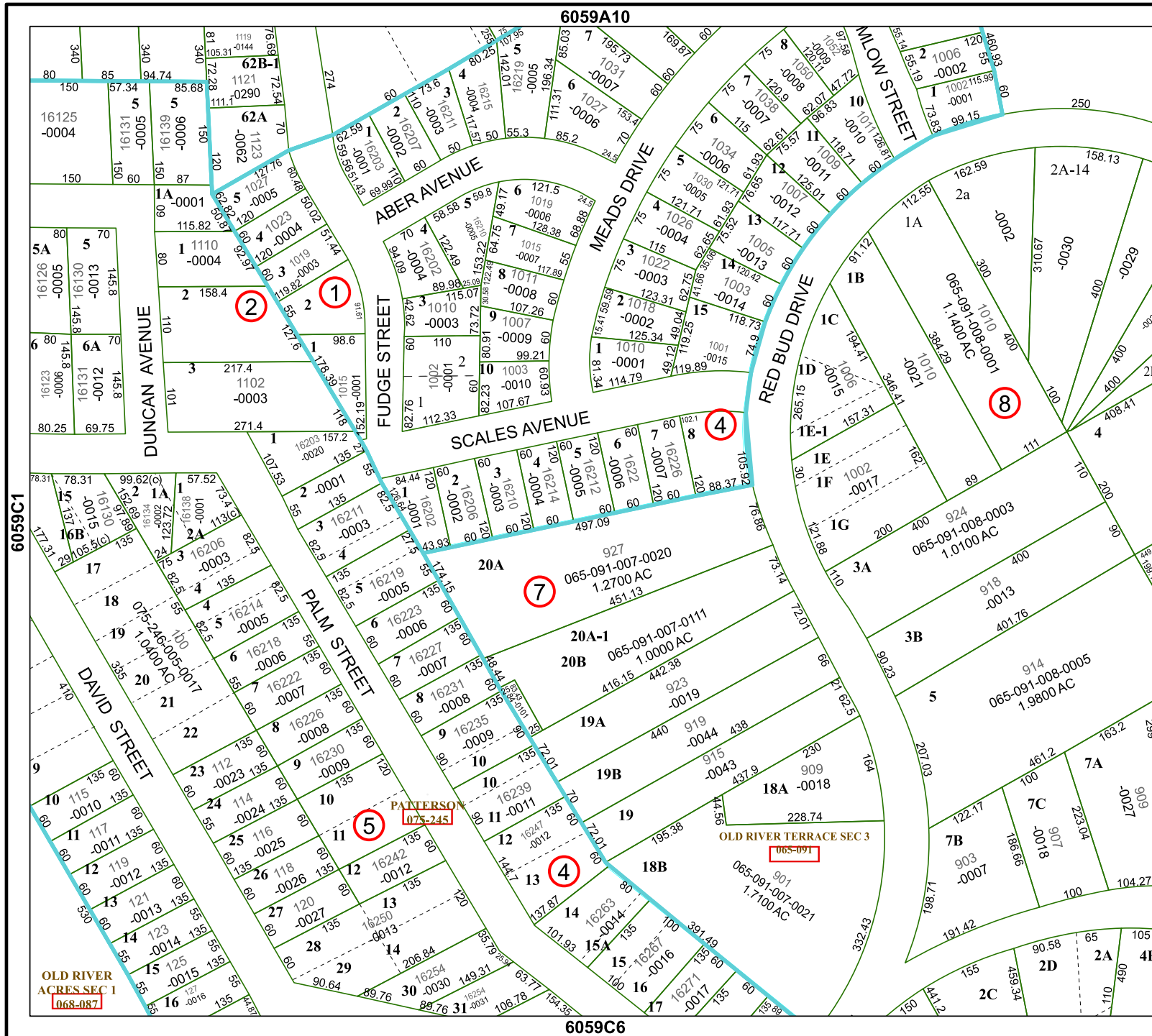


MAP LOCATION



FACET 6059C2

12	9	10	11	12
4	1	2	3	4
8	5	6	7	8



6059A10

6059C6

6059C1

6059C3

OLD RIVER ACRES SEC 1
068-087

OLD RIVER TERRACE SEC 3
065-091