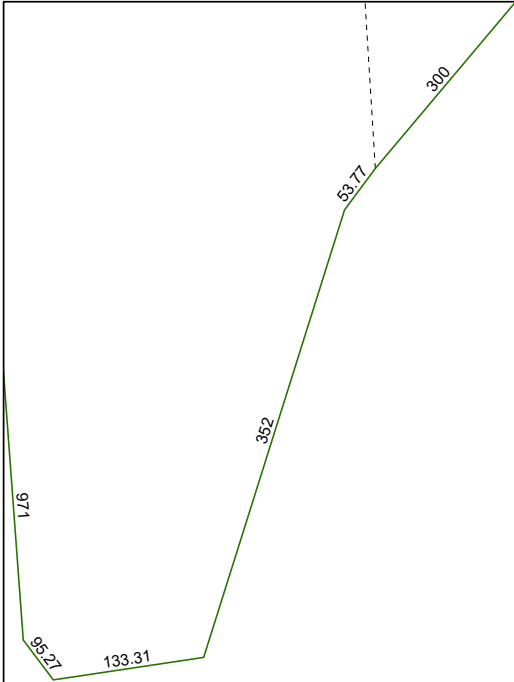


6059D8

6059D11



6058B4

# Harris Central Appraisal District



0 50 100 200 Feet

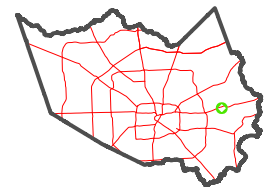
PUBLICATION DATE:  
12/17/2025

Geospatial or map data maintained by the Harris Central Appraisal District is for informational purposes and may **not** have been prepared for or be suitable for legal, engineering, or surveying purposes. It does **not** represent an on-the-ground survey and only represents the approximate location of property boundaries.



6159C9

## MAP LOCATION



## FACET

### 6059D12

6	7	8	5	6
10	11	12	9	10
2	3	4	1	2