

6060C5

5960D12

Harris Central Appraisal District

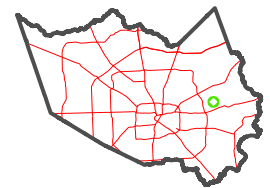


0 45 90 180
Feet

PUBLICATION DATE:
5/6/2024

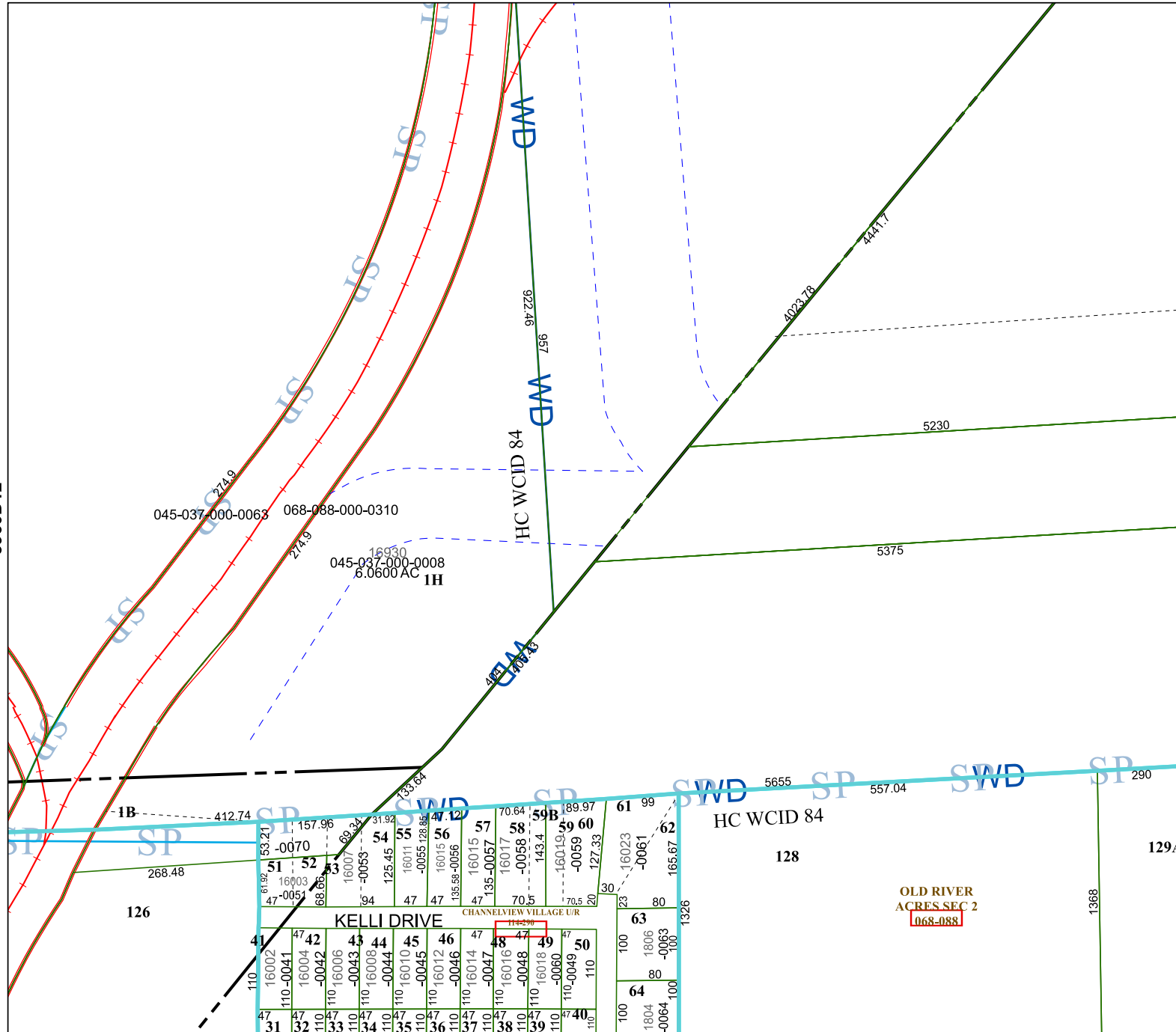
Geospatial or map data maintained by the Harris Central Appraisal District is for informational purposes and may **not** have been prepared for or be suitable for legal, engineering, or surveying purposes. It does **not** represent an on-the-ground survey and only represents the approximate location of property boundaries.

MAP LOCATION



FACET 6060C9

7	8	5	6	7
11	12	9	10	11
3	4	1	2	3



6059A1

OLD RIVER
ACRES SEC 2
068-088