

# Harris Central Appraisal District

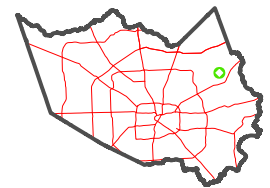


0 45 90 180 Feet

PUBLICATION DATE:  
1/22/2024

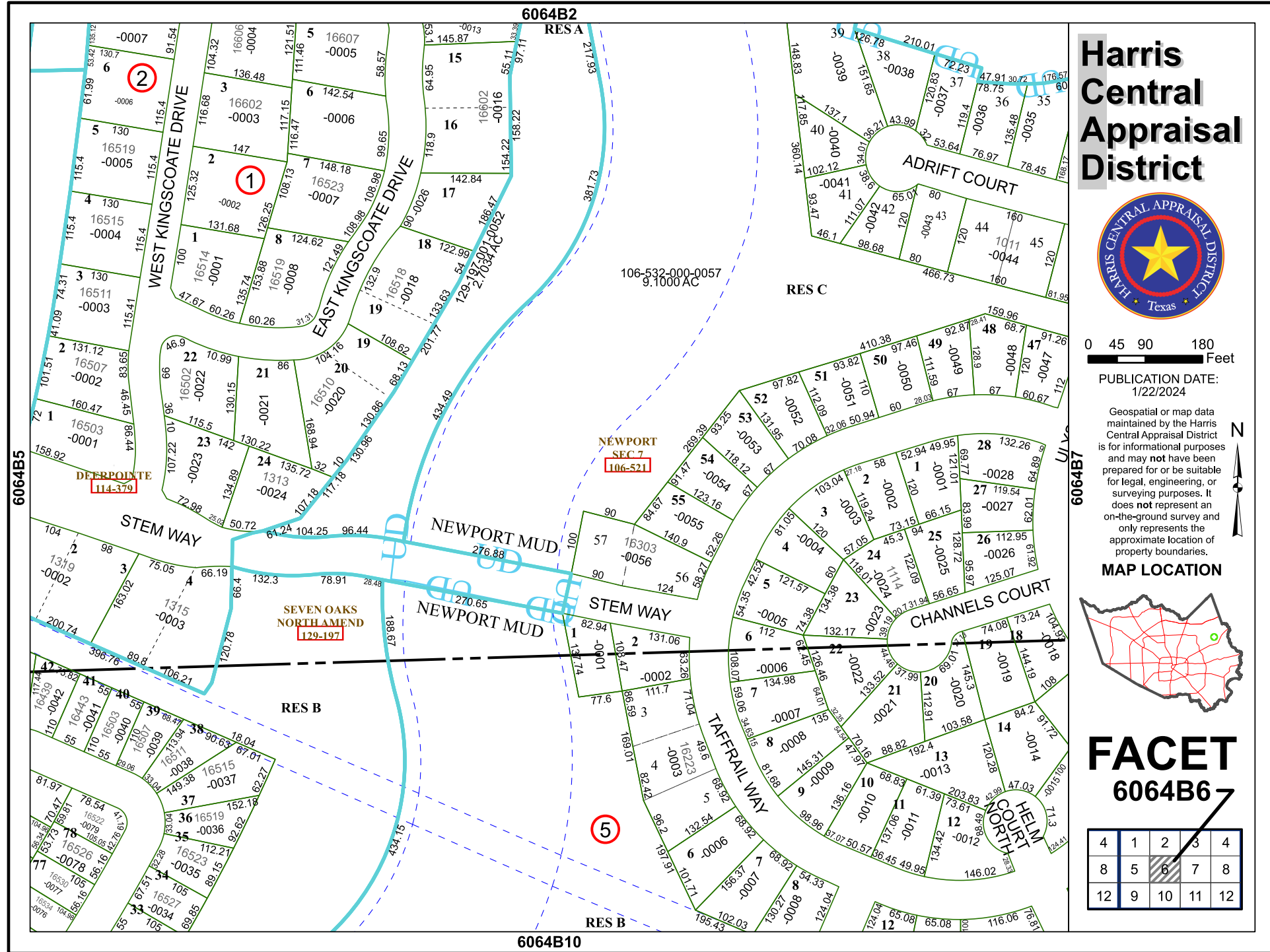
Geospatial or map data maintained by the Harris Central Appraisal District is for informational purposes and may not have been prepared for or be suitable for legal, engineering, or surveying purposes. It does not represent an on-the-ground survey and only represents the approximate location of property boundaries.

MAP LOCATION



## FACET 6064B6

4	1	2	3	4
8	5	6	7	8
12	9	10	11	12



6064B2

6064B5

6064B7

6064B10

5

2

1

5