

6066D12

CROSBY  
MEADOWS U/R  
114-211

# Harris Central Appraisal District



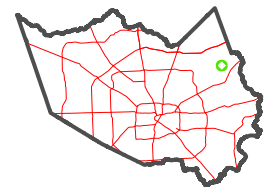
0 45 90 180  
Feet

PUBLICATION DATE:  
5/21/2024

Geospatial or map data maintained by the Harris Central Appraisal District is for informational purposes and may not have been prepared for or be suitable for legal, engineering, or surveying purposes. It does not represent an on-the-ground survey and only represents the approximate location of property boundaries.

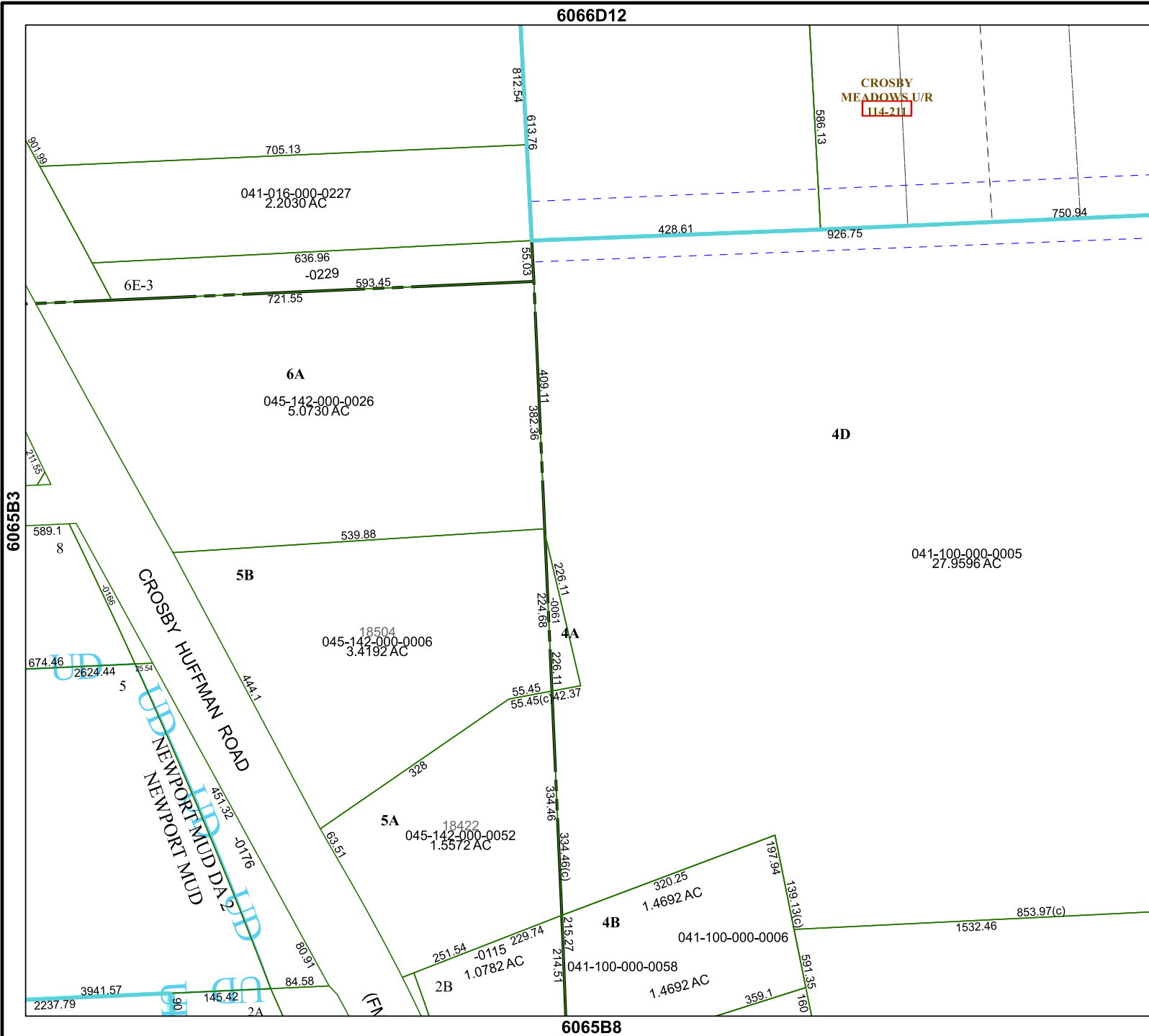


MAP LOCATION



## FACET 6065B4

10	11	12	9	10
2	3	4	1	2
6	7	8	5	6



6065B3

6165A

6065B8