

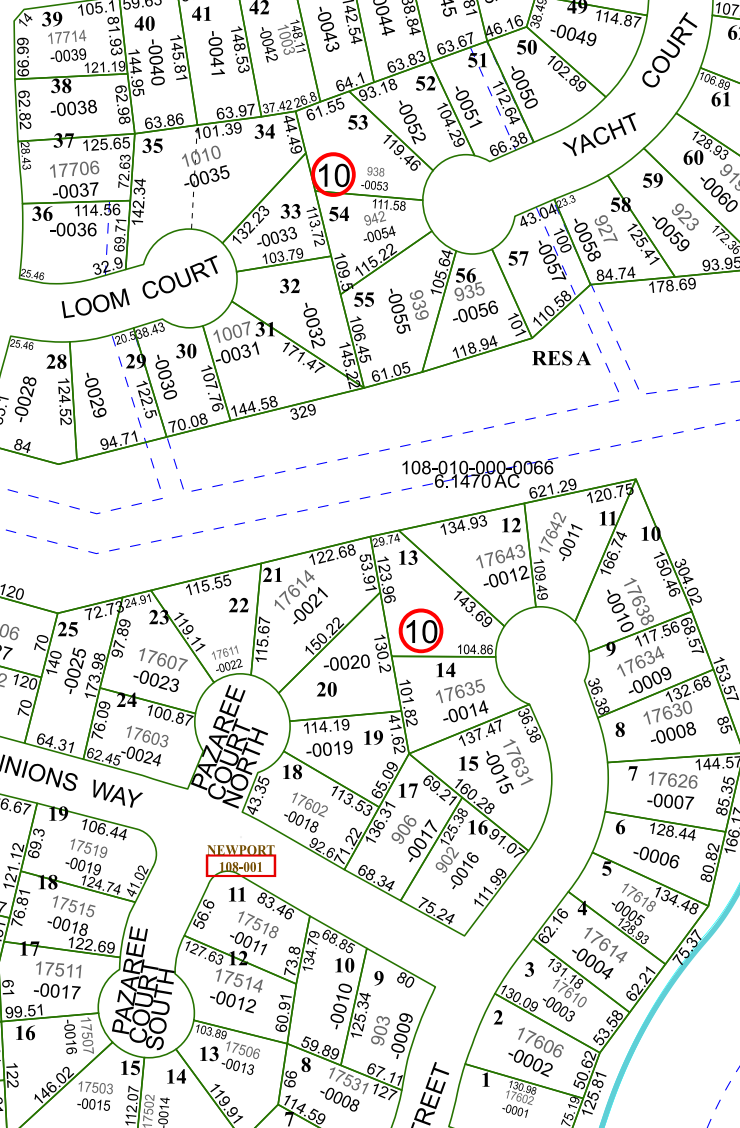
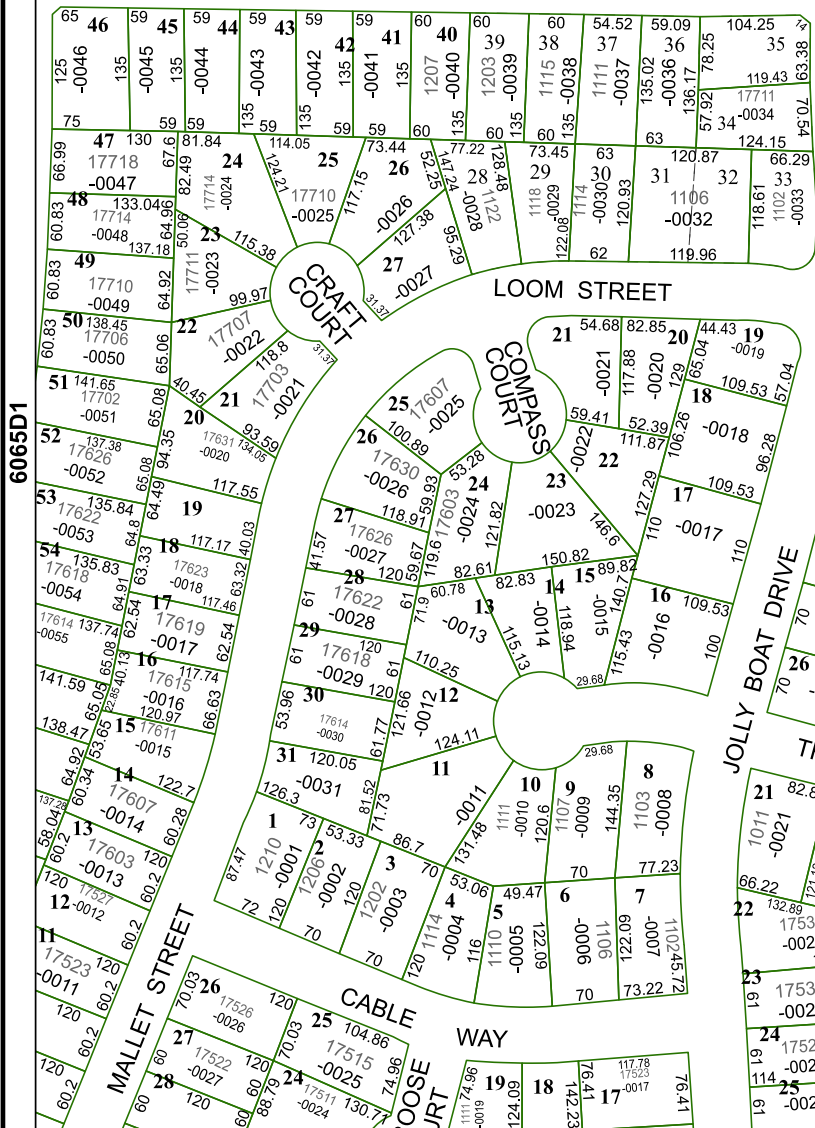
6065B10

UNION
PARK SEC 3
139-264

GOLF CLUB DRIVE
AT FOLEY ROAD STD
045-142

569.25

NORTH DIAMONDHEAD BOULEVARD



Harris Central Appraisal District

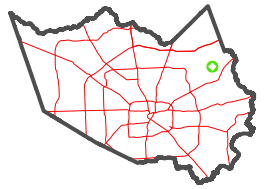


0 45 90 180 Feet

PUBLICATION DATE:
5/6/2024

Geospatial or map data maintained by the Harris Central Appraisal District is for informational purposes and may not have been prepared for or be suitable for legal, engineering, or surveying purposes. It does not represent an on-the-ground survey and only represents the approximate location of property boundaries.

MAP LOCATION



FACET 6065D2

12	9	10	11	12
4	1	2	3	4
8	5	6	7	8

6065D1

6065D3

6065D6