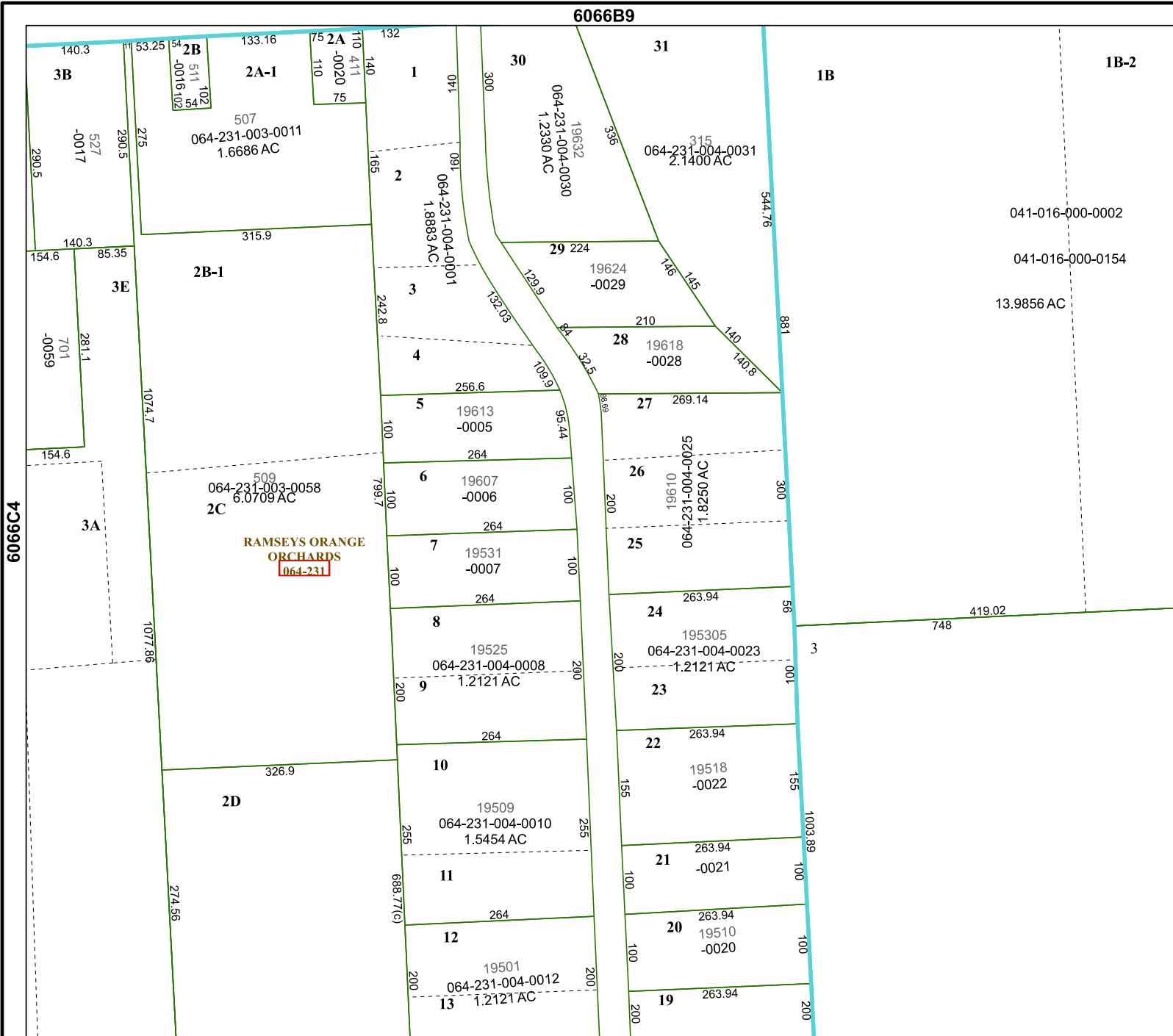


6066B9

6066D5



Harris Central Appraisal District



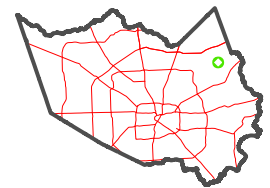
0 45 90 180 Feet

PUBLICATION DATE:
5/11/2023

Geospatial or map data maintained by the Harris Central Appraisal District is for informational purposes and may not have been prepared for or be suitable for legal, engineering, or surveying purposes. It does not represent an on-the-ground survey and only represents the approximate location of property boundaries.



MAP LOCATION



FACET 6066D1

11	12	9	10	11
3	4	1	2	3
7	8	5	6	7

041-016-000-0002
041-016-000-0154
13.9856 AC

2D9909

6066C4