

6069B5

21G

Harris Central Appraisal District



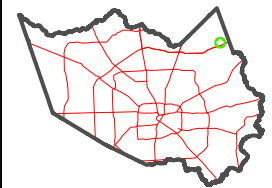
0 45 90 180 Feet

PUBLICATION DATE:
2/28/2024

Geospatial or map data maintained by the Harris Central Appraisal District is for informational purposes and may not have been prepared for or be suitable for legal, engineering, or surveying purposes. It does not represent an on-the-ground survey and only represents the approximate location of property boundaries.



MAP LOCATION



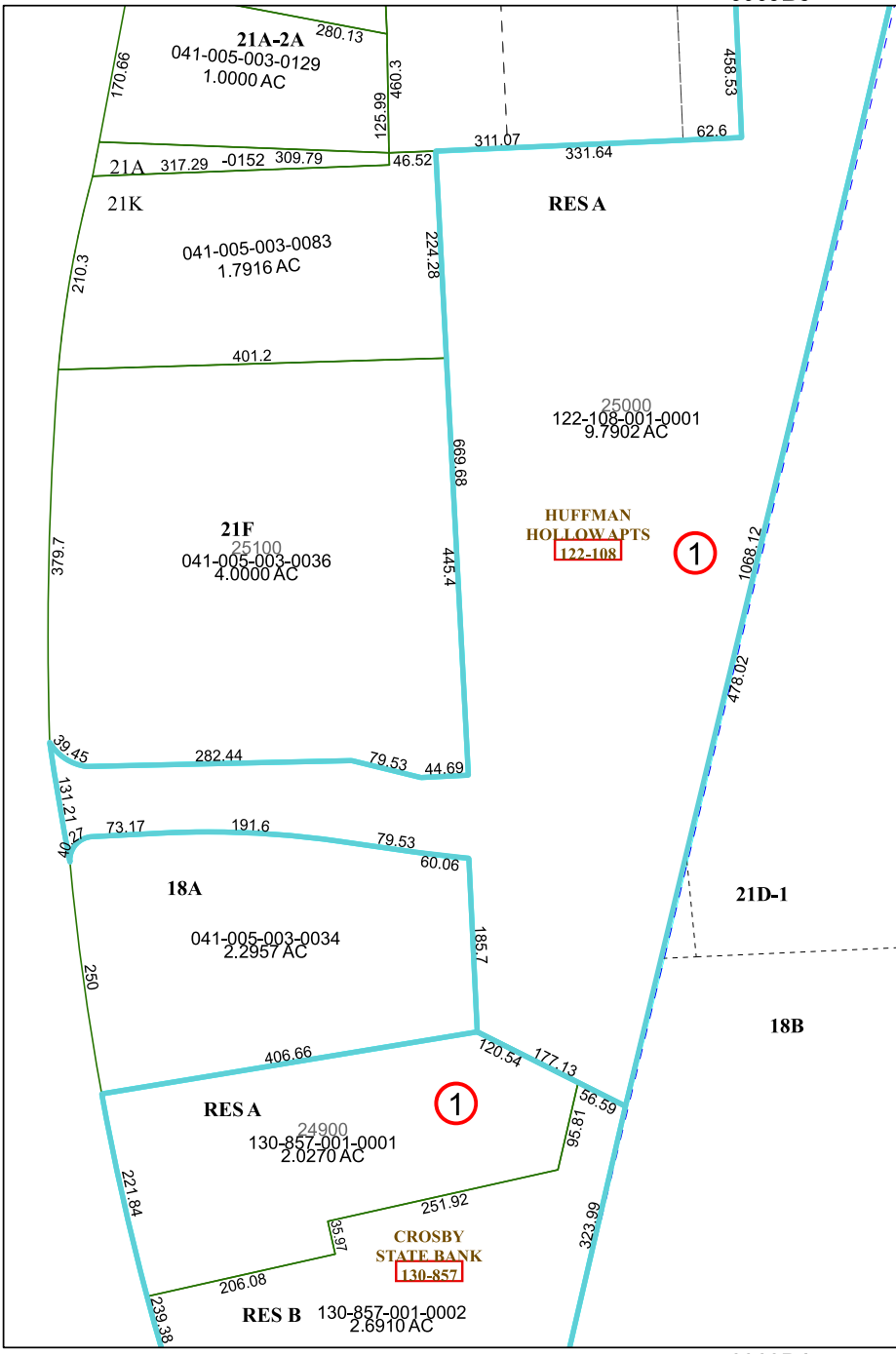
FACET 6069B9

7	8	5	6	7
11	12	9	10	11
3	4	1	2	3

6069D1

6069A12

6069B10



21K

RES A

18A

21D-1

18B

RES A

RES B