

6069B9

18B

CROSBY  
STATE BANK  
130-857

18D

24750  
041-005-003-0120  
1.3340 AC

18B

246.33

280

135.93

12A

212.9

209.27

12J

12G

24722  
-0012

144.52

24722

041-005-003-0044  
1.2000 AC

202.39

203.11

212.7

12B

213.29

319.95

104.89

198.63

207.24

12E

216.58

216.55

216

12D

210

210

216.58

24718  
-0046  
1.0000 AC

041-005-003-0057  
2.0770 AC

201.75

77.58

189.03

46.11 40.74

44.11 40.79

221.13

220.98

105.9

189.18

12G

139-855-001-0001  
1.9344 AC

CORATO  
ESTATES  
139-855

1

258.58

-0002

119.25

341.50

RES  
A

257.52

598.55

12G

147.74

46.97

228.83

12N

69.013

6069D5

# Harris Central Appraisal District



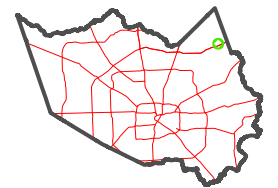
0 45 90 180 Feet

PUBLICATION DATE:  
1/13/2025

Geospatial or map data maintained by the Harris Central Appraisal District is for informational purposes and may not have been prepared for or be suitable for legal, engineering, or surveying purposes. It does not represent an on-the-ground survey and only represents the approximate location of property boundaries.



MAP LOCATION



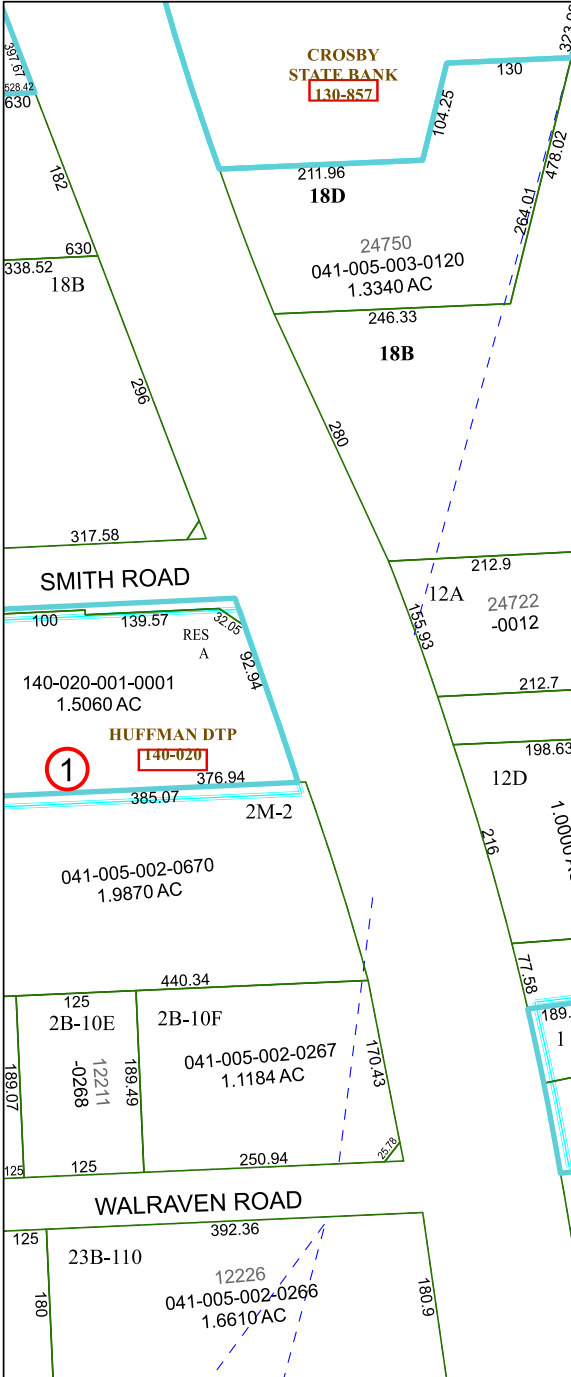
# FACET

## 6069D1

11	12	9	10	11
3	4	1	2	3
7	8	5	6	7

6069C4

6069D2



SMITH ROAD

RES  
A

HUFFMAN DTP  
140-020

1

2M-2

2B-10E

2B-10F

WALRAVEN ROAD

23B-110

RES  
A

12N