

6070D8

5907.84

252.7

10C

# Harris Central Appraisal District



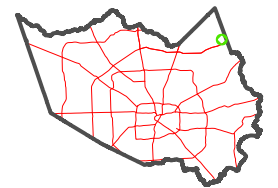
0 45 90 180 Feet

PUBLICATION DATE:  
3/11/2024

Geospatial or map data maintained by the Harris Central Appraisal District is for informational purposes and may not have been prepared for or be suitable for legal, engineering, or surveying purposes. It does not represent an on-the-ground survey and only represents the approximate location of property boundaries.



### MAP LOCATION



## FACET 6070D12

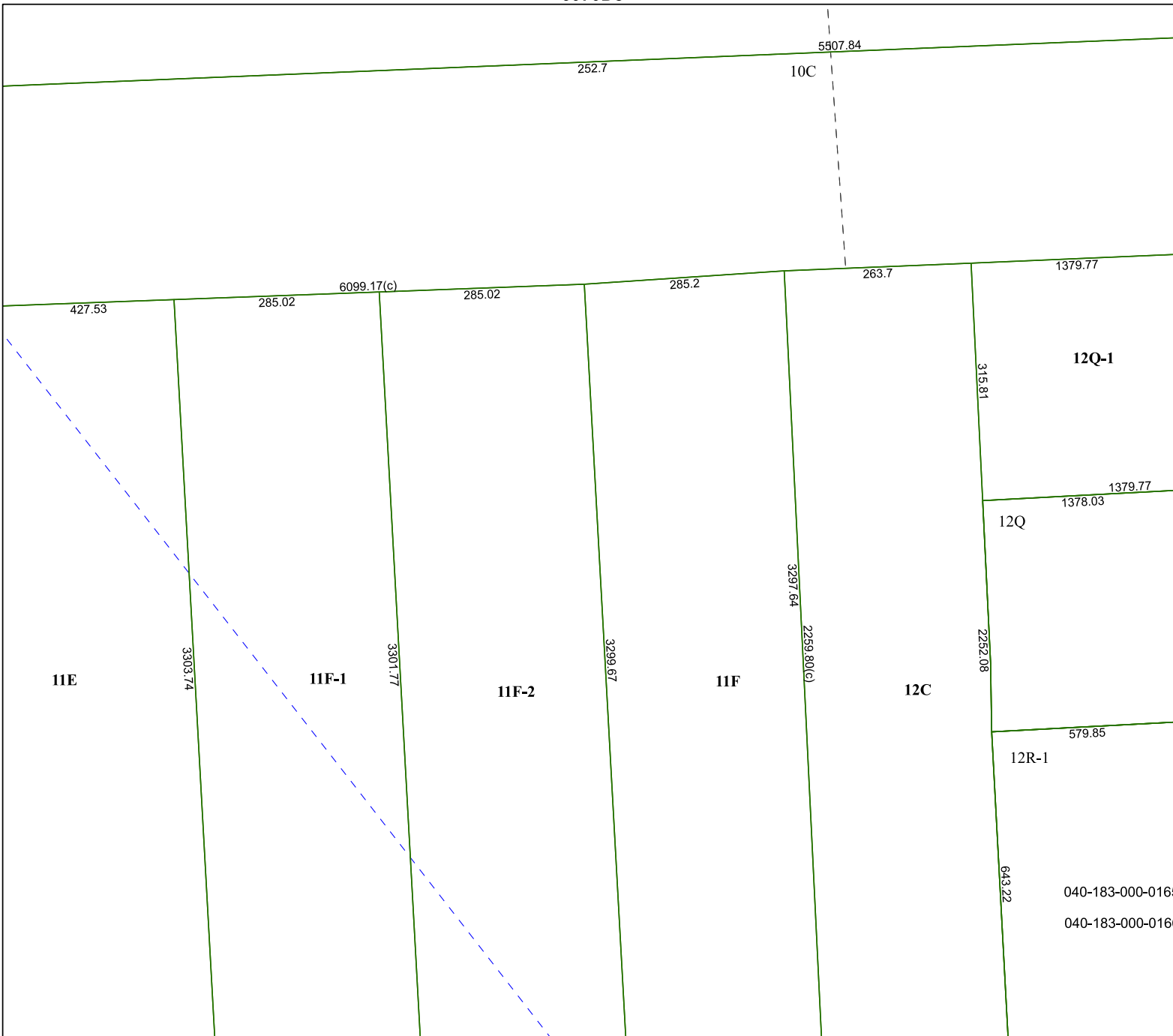
040-183-000-0165

040-183-000-0166

6	7	8	5	6
10	11	12	9	10
2	3	4	1	2

6070D11

6170C



6069B4