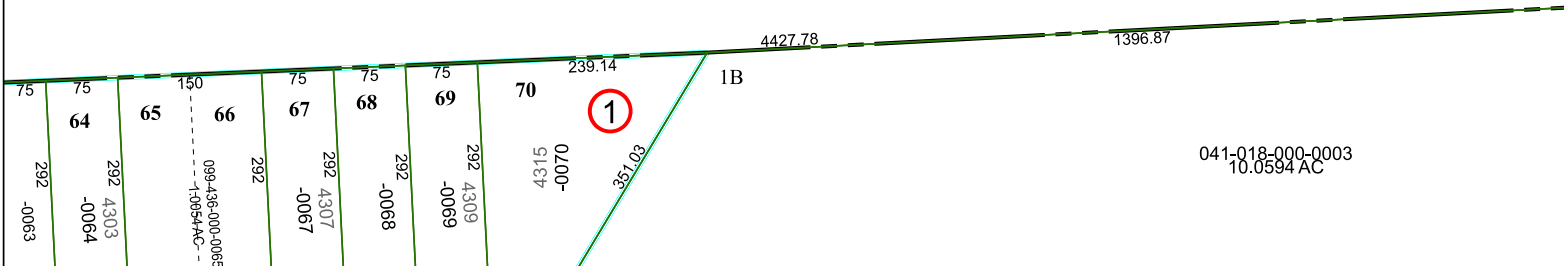


6072D5

6072C12



6071B1

Harris Central Appraisal District



0 45 90 180 Feet

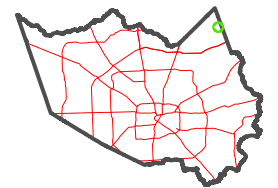
PUBLICATION DATE:
1/13/2025

Geospatial or map data maintained by the Harris Central Appraisal District is for informational purposes and may **not** have been prepared for or be suitable for legal, engineering, or surveying purposes. It does **not** represent an on-the-ground survey and only represents the approximate location of property boundaries.



6072D10

MAP LOCATION



FACET 6072D9

7	8	5	6	7
11	12	9	10	11
3	4	1	2	3