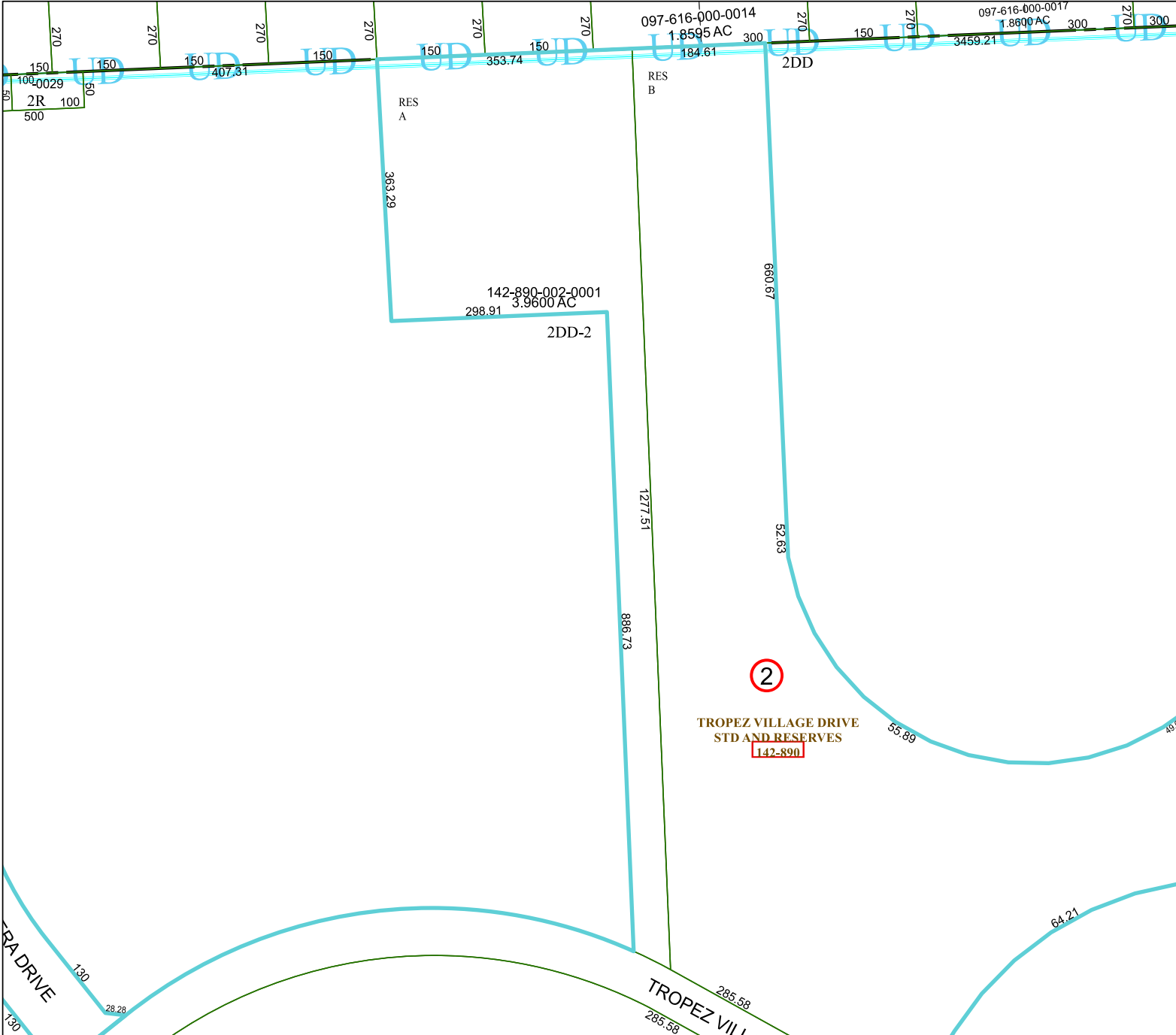


6073A5

097-616-000-0014
1.8595 AC

097-616-000-0017
1.8600 AC



Harris Central Appraisal District



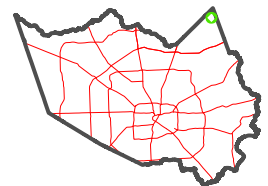
0 45 90 180 Feet

PUBLICATION DATE:
4/22/2024

Geospatial or map data maintained by the Harris Central Appraisal District is for informational purposes and may **not** have been prepared for or be suitable for legal, engineering, or surveying purposes. It does **not** represent an on-the-ground survey and only represents the approximate location of property boundaries.



MAP LOCATION



FACET 6073A9

7	8	5	6	7
11	12	9	10	11
3	4	1	2	3

6073C1

5973B12

6073A10

TRA DRIVE

TROPEZ VILL

TROPEZ VILLAGE DRIVE
STD AND RESERVES
142-890

2