

6073A9

6073C5

# Harris Central Appraisal District



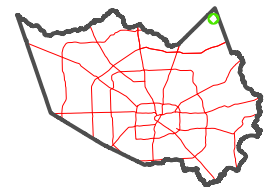
0 45 90 180 Feet

PUBLICATION DATE:  
2/24/2025

Geospatial or map data maintained by the Harris Central Appraisal District is for informational purposes and may not have been prepared for or be suitable for legal, engineering, or surveying purposes. It does not represent an on-the-ground survey and only represents the approximate location of property boundaries.



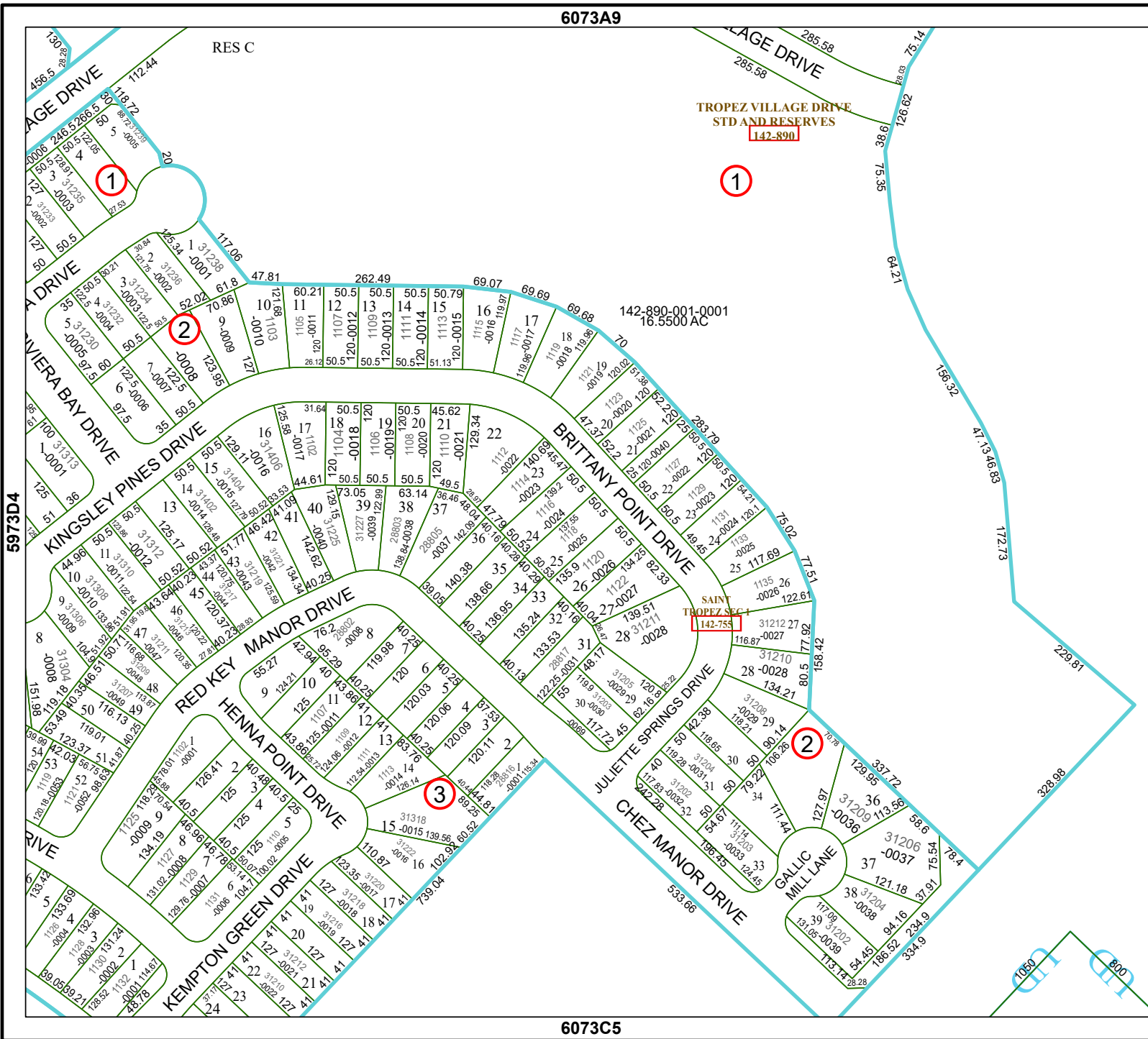
MAP LOCATION



## FACET

### 6073C1

11	12	9	10	11
3	4	1	2	3
7	8	5	6	7



RES C

TROPEZ VILLAGE DRIVE  
STD AND RESERVES  
142-890

142-890-001-0001  
16.5500 AC

SAINT TROPEZ SEC 1  
142-755

