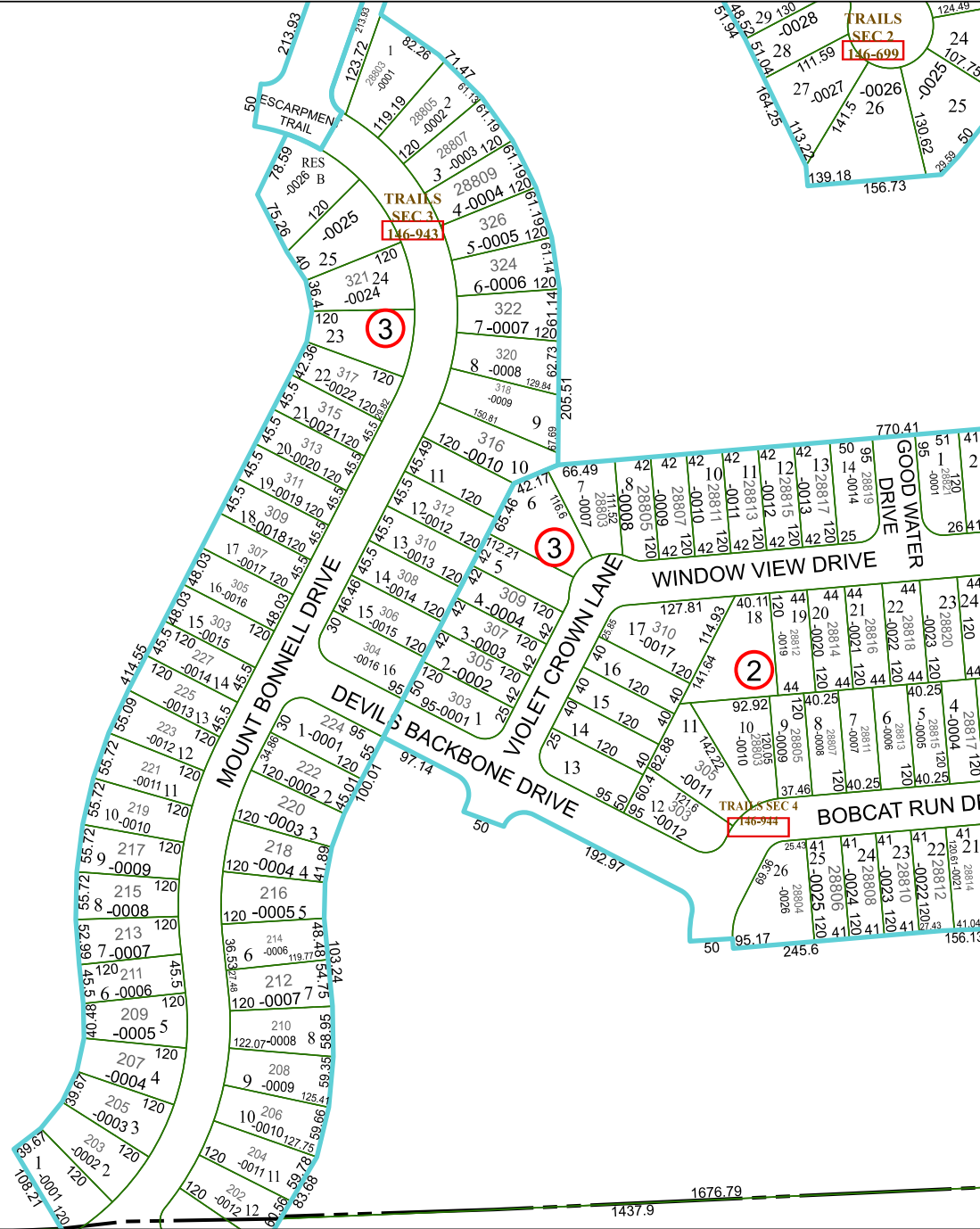


6074A5

6074C1



Harris Central Appraisal District

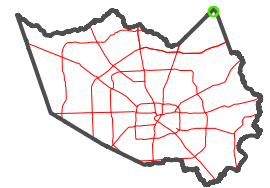


0 45 90 180 Feet

PUBLICATION DATE:
1/13/2025

Geospatial or map data maintained by the Harris Central Appraisal District is for informational purposes and may **not** have been prepared for or be suitable for legal, engineering, or surveying purposes. It does **not** represent an on-the-ground survey and only represents the approximate location of property boundaries.

MAP LOCATION



FACET

6074A9

7	8	5	6	7
11	12	9	10	11
3	4	1	2	3

5974B12