

Harris Central Appraisal District

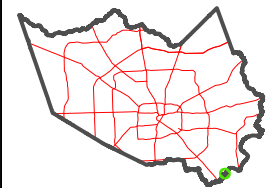


0 45 90 180 Feet

PUBLICATION DATE:
4/11/2023

Geospatial or map data maintained by the Harris Central Appraisal District is for informational purposes and may not have been prepared for or be suitable for legal, engineering, or surveying purposes. It does not represent an on-the-ground survey and only represents the approximate location of property boundaries.

MAP LOCATION

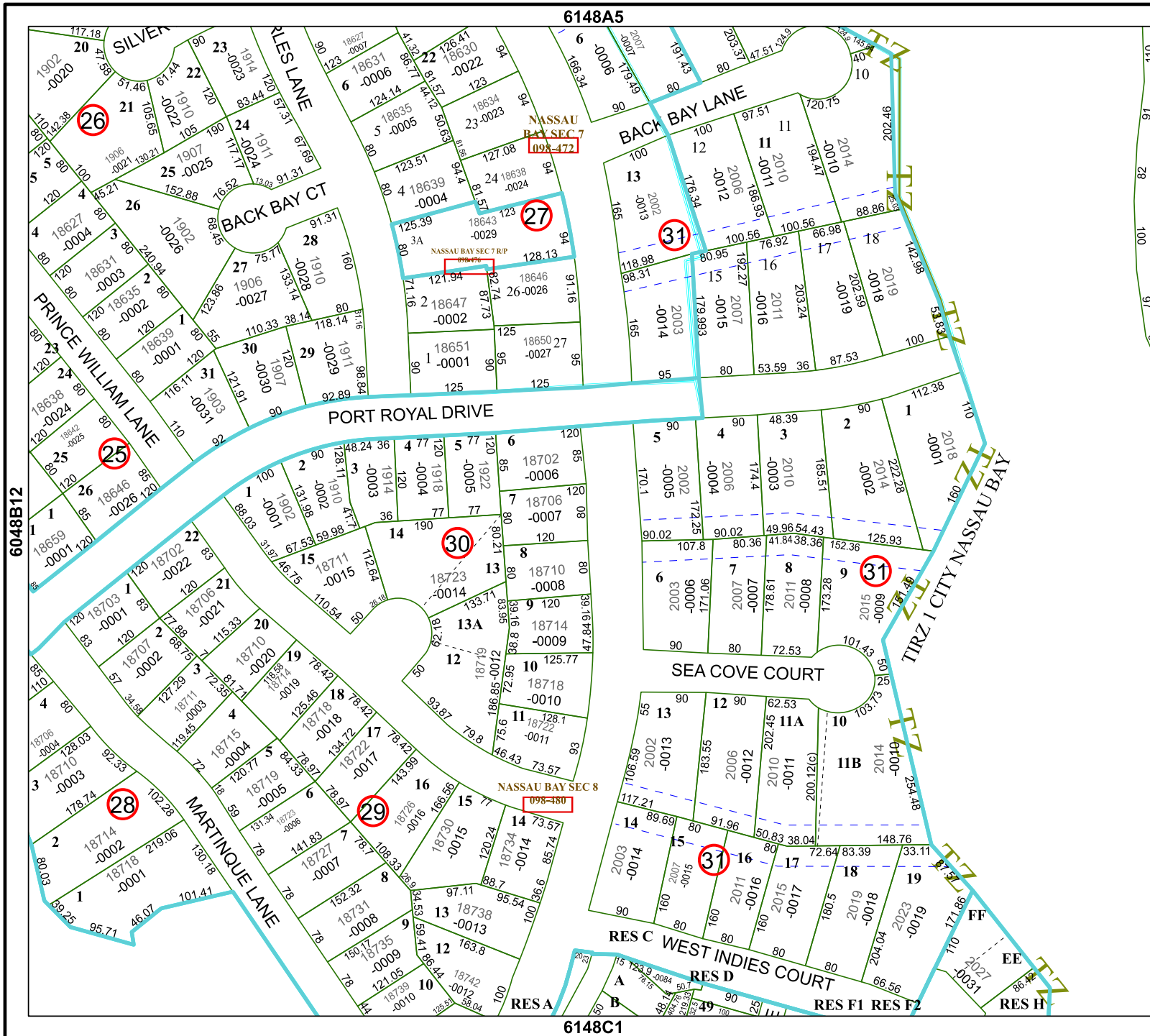


FACET 6148A9

7	8	5	6	7
11	12	9	10	11
3	4	1	2	3

6148A5

6148C1



NASSAU BAY SEC 7
098-472

NASSAU BAY SEC 7 RP
098-472

NASSAU BAY SEC 8
098-480

6048B12

6148A10

