

Harris Central Appraisal District

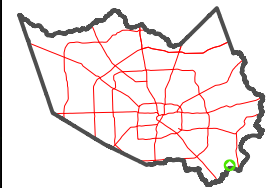


0 45 90 180 Feet

PUBLICATION DATE: 1/4/2023

Geospatial or map data maintained by the Harris Central Appraisal District is for informational purposes and may not have been prepared for or be suitable for legal, engineering, or surveying purposes. It does not represent an on-the-ground survey and only represents the approximate location of property boundaries.

MAP LOCATION

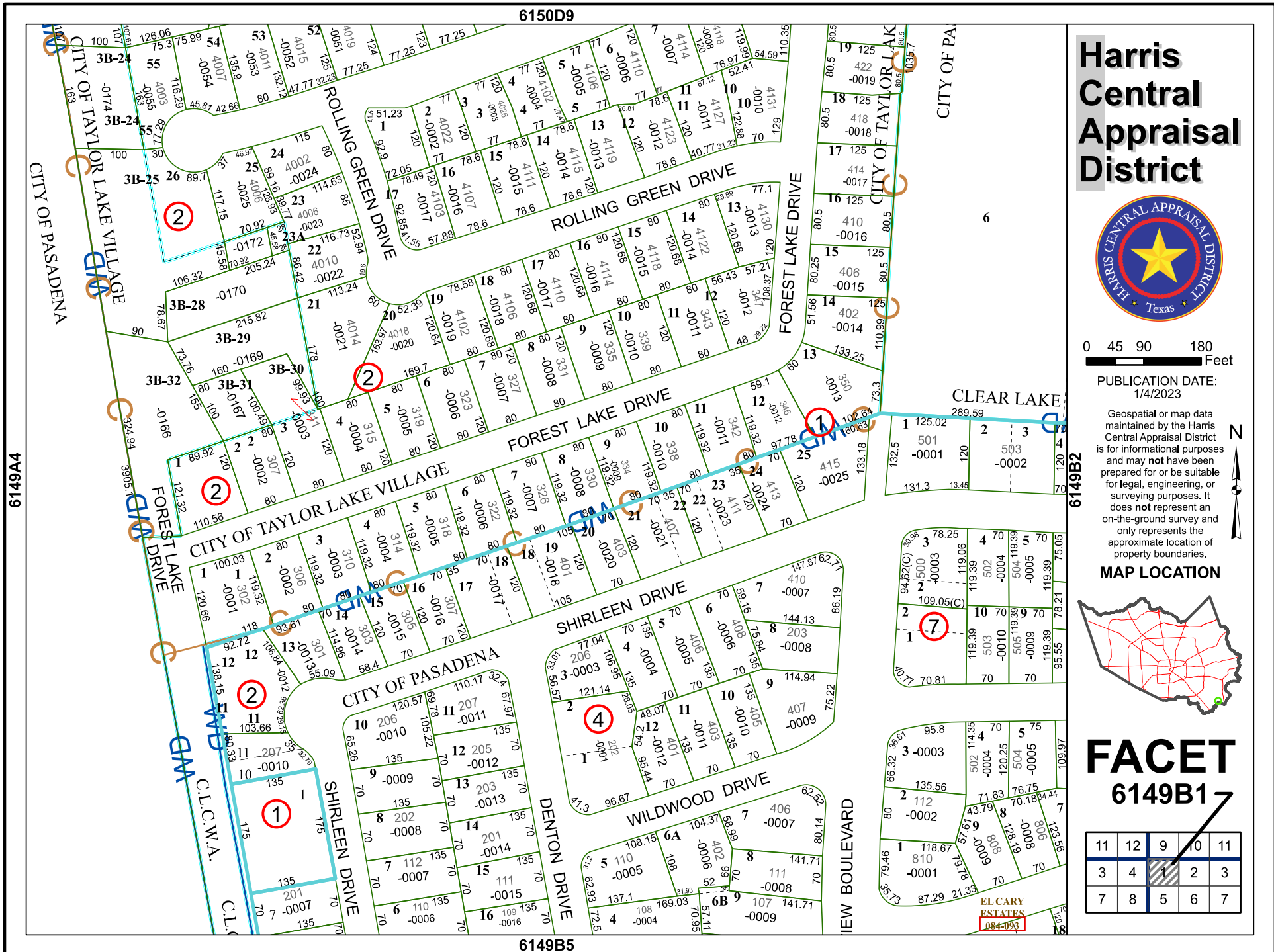


FACET 6149B1

11	12	9	10	11
3	4	1	2	3
7	8	5	6	7

6150D9

6149B5



CITY OF PASADENA

6149A4

CITY OF PASADENA

CLEAR LAKE

6149B2

EL CARY ESTATES 084-093