

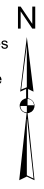
# Harris Central Appraisal District



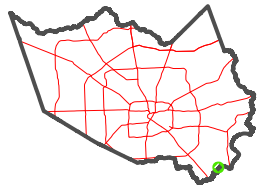
0 45 90 180 Feet

PUBLICATION DATE: 1/4/2023

Geospatial or map data maintained by the Harris Central Appraisal District is for informational purposes and may not have been prepared for or be suitable for legal, engineering, or surveying purposes. It does not represent an on-the-ground survey and only represents the approximate location of property boundaries.



## MAP LOCATION



# FACET 6149C7

1	2	3	4	1
5	6	7	8	5
9	10	11	12	9

6149C6

6149C3

6149C11

6149C8

113-412-001-0001  
THRU  
113-412-003-0011  
113-413-001-0001  
THRU  
113-413-003-0011

351

B

BAL HARBOUR COVE  
107-768

THE BAYFRONT  
113-412

RES A  
107-771-000-0031  
18.5097 AC

RES W

RES BB

RES CC

RES E

RES Q

RES P

RES O

RES F

TIRZ 1 CITY NASSAU BAY

GLAR LAKE FARMS  
053-278

BAL HARBOUR DRIVE

LAKESIDE DRIVE