

6150C6

1D

Harris Central Appraisal District



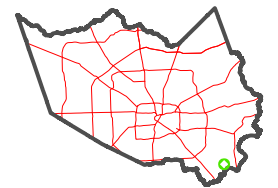
0 45 90 180 Feet

PUBLICATION DATE:
1/4/2023

Geospatial or map data maintained by the Harris Central Appraisal District is for informational purposes and may not have been prepared for or be suitable for legal, engineering, or surveying purposes. It does not represent an on-the-ground survey and only represents the approximate location of property boundaries.



MAP LOCATION



FACET 6150C10

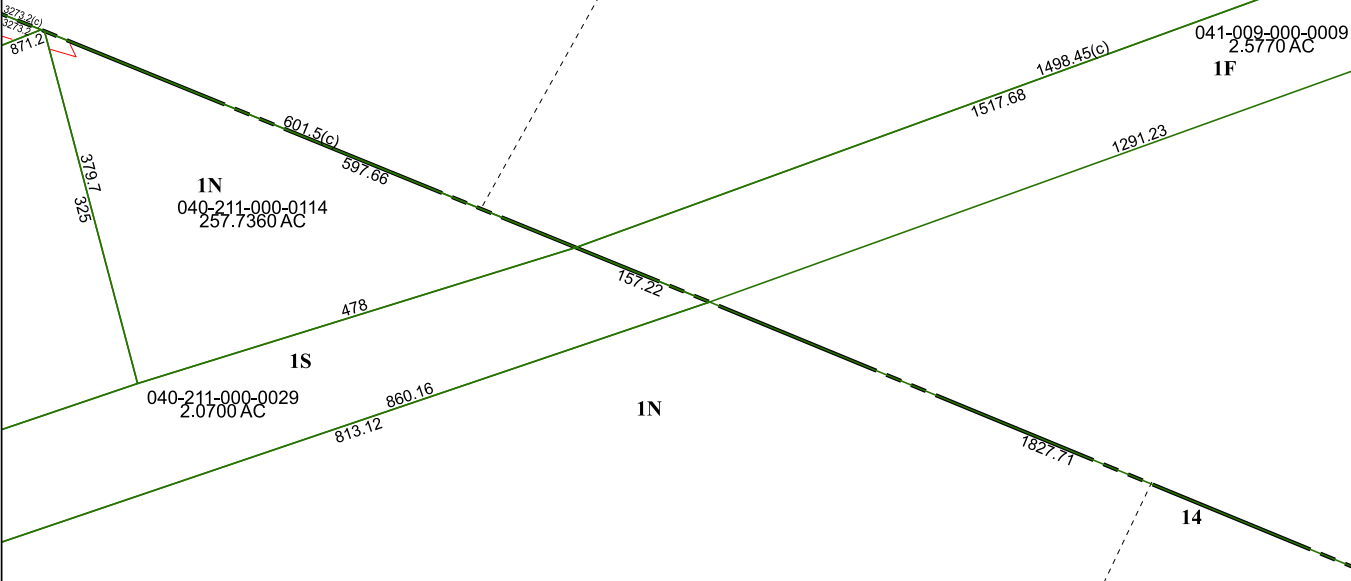
8	5	6	7	8
12	9	10	11	12
4	1	2	3	4

6150C9

6150C11

6149A2

14



1N
040-211-000-0114
257.7360 AC

1S
040-211-000-0029
2.0700 AC

041-009-000-0009
2.5770 AC
1F