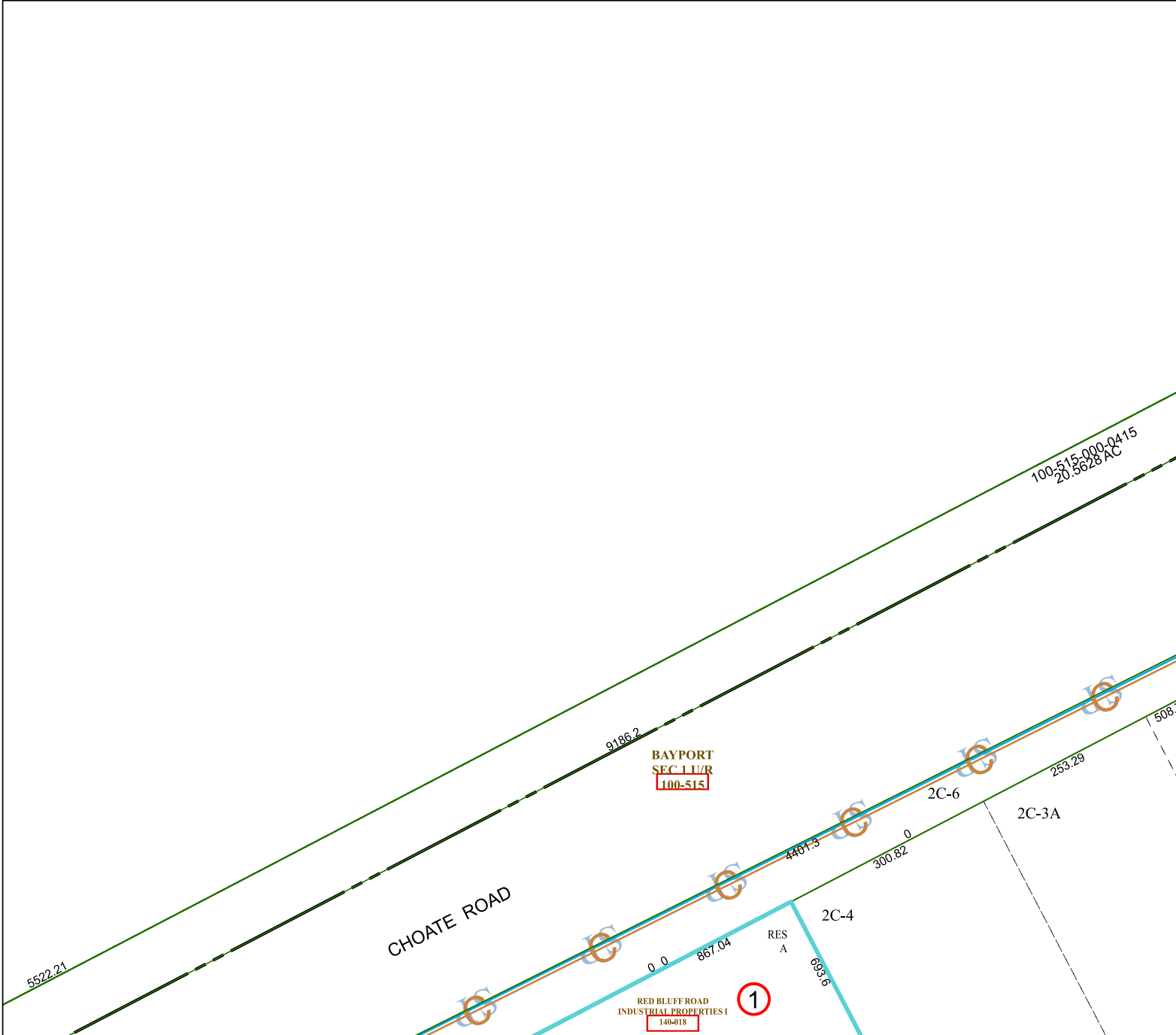


6152C11

6151A2



6151A7

Harris Central Appraisal District



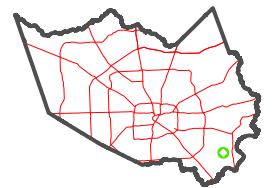
0 45 90 180
Feet

PUBLICATION DATE:
3/13/2023

Geospatial or map data maintained by the Harris Central Appraisal District is for informational purposes and may not have been prepared for or be suitable for legal, engineering, or surveying purposes. It does not represent an on-the-ground survey and only represents the approximate location of property boundaries.



MAP LOCATION



FACET

6151A3

9	10	11	12	9
1	2	3	4	1
5	6	7	8	5