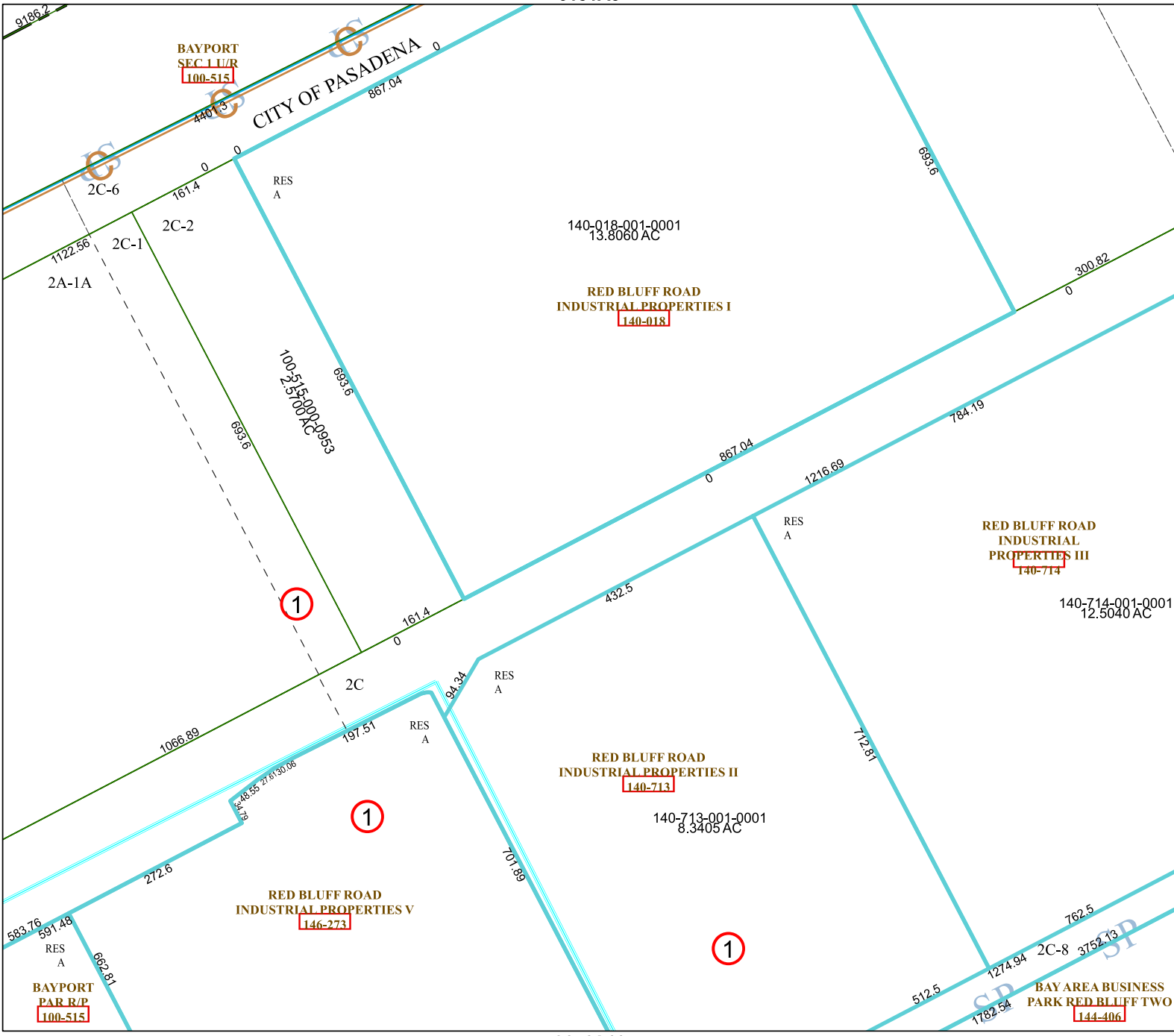


6151A3

6151A6



# Harris Central Appraisal District



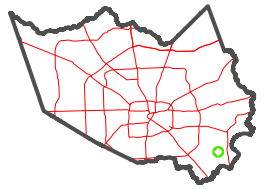
0 45 90 180 Feet

PUBLICATION DATE:  
3/13/2023

Geospatial or map data maintained by the Harris Central Appraisal District is for informational purposes and may not have been prepared for or be suitable for legal, engineering, or surveying purposes. It does not represent an on-the-ground survey and only represents the approximate location of property boundaries.



### MAP LOCATION



## FACET 6151A7

1	2	3	4	1
5	6	7	8	5
9	10	11	12	9

6151A11

6151A8

BAYPORT  
PAR R/P  
100-515

BAYPORT  
SEC 1 U/R  
100-515

140-018-001-0001  
13.8060 AC

RED BLUFF ROAD  
INDUSTRIAL PROPERTIES I  
140-018

100-515-000-0953  
693.6

RED BLUFF ROAD  
INDUSTRIAL PROPERTIES III  
140-714

140-714-001-0001  
12.5040 AC

RED BLUFF ROAD  
INDUSTRIAL PROPERTIES II  
140-713

140-713-001-0001  
8.3405 AC

RED BLUFF ROAD  
INDUSTRIAL PROPERTIES V  
146-273

BAY AREA BUSINESS  
PARK RED BLUFF TWO  
144-406