

6151A4

Harris Central Appraisal District



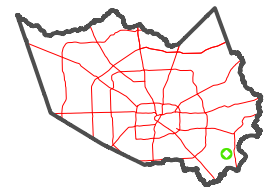
0 45 90 180 Feet

PUBLICATION DATE:
3/13/2023

Geospatial or map data maintained by the Harris Central Appraisal District is for informational purposes and may not have been prepared for or be suitable for legal, engineering, or surveying purposes. It does not represent an on-the-ground survey and only represents the approximate location of property boundaries.



MAP LOCATION



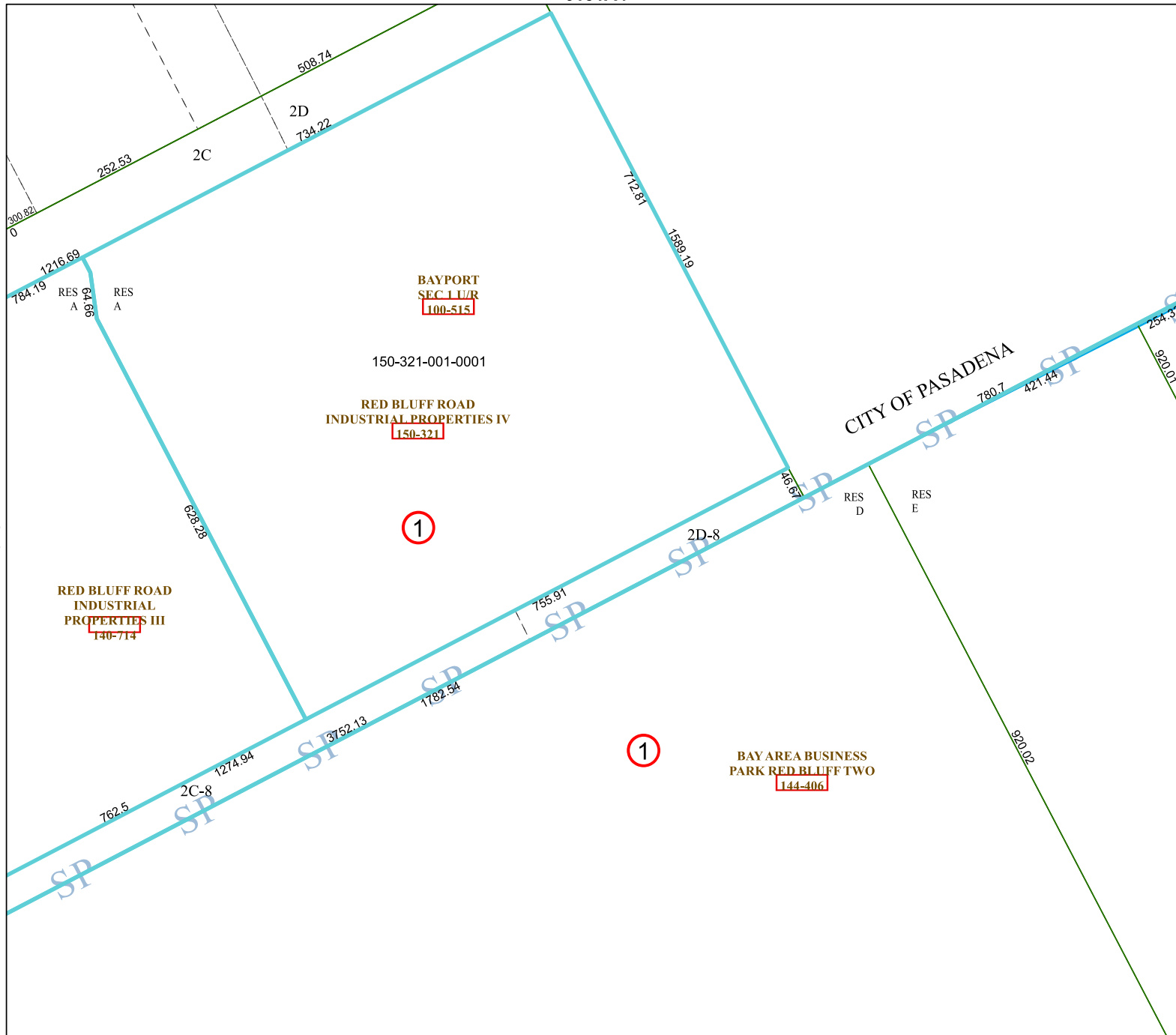
FACET 6151A8

2	3	4	1	2
6	7	8	5	6
10	11	12	9	10

6151A12

6151A7

6151B5



BAYPORT
SEC 1 U/R
100-515

150-321-001-0001

RED BLUFF ROAD
INDUSTRIAL PROPERTIES IV
150-321

1

RED BLUFF ROAD
INDUSTRIAL PROPERTIES III
140-714

BAY AREA BUSINESS
PARK RED BLUFF TWO
144-406

1

CITY OF PASADENA

2C-8

2D-8

762.5

1274.94

1782.54

3752.13

64.66

784.19

RES A

RES A

RES D

RES E

712.81

1589.19

780.7

421.44

254.33

920.01

920.02

2C

2D

734.22

508.74

252.53

300.82

1216.89

64.66