

6152D11

55A

Harris Central Appraisal District



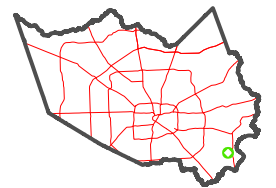
0 45 90 180 Feet

PUBLICATION DATE:
1/4/2023

Geospatial or map data maintained by the Harris Central Appraisal District is for informational purposes and may **not** have been prepared for or be suitable for legal, engineering, or surveying purposes. It does **not** represent an on-the-ground survey and only represents the approximate location of property boundaries.



MAP LOCATION

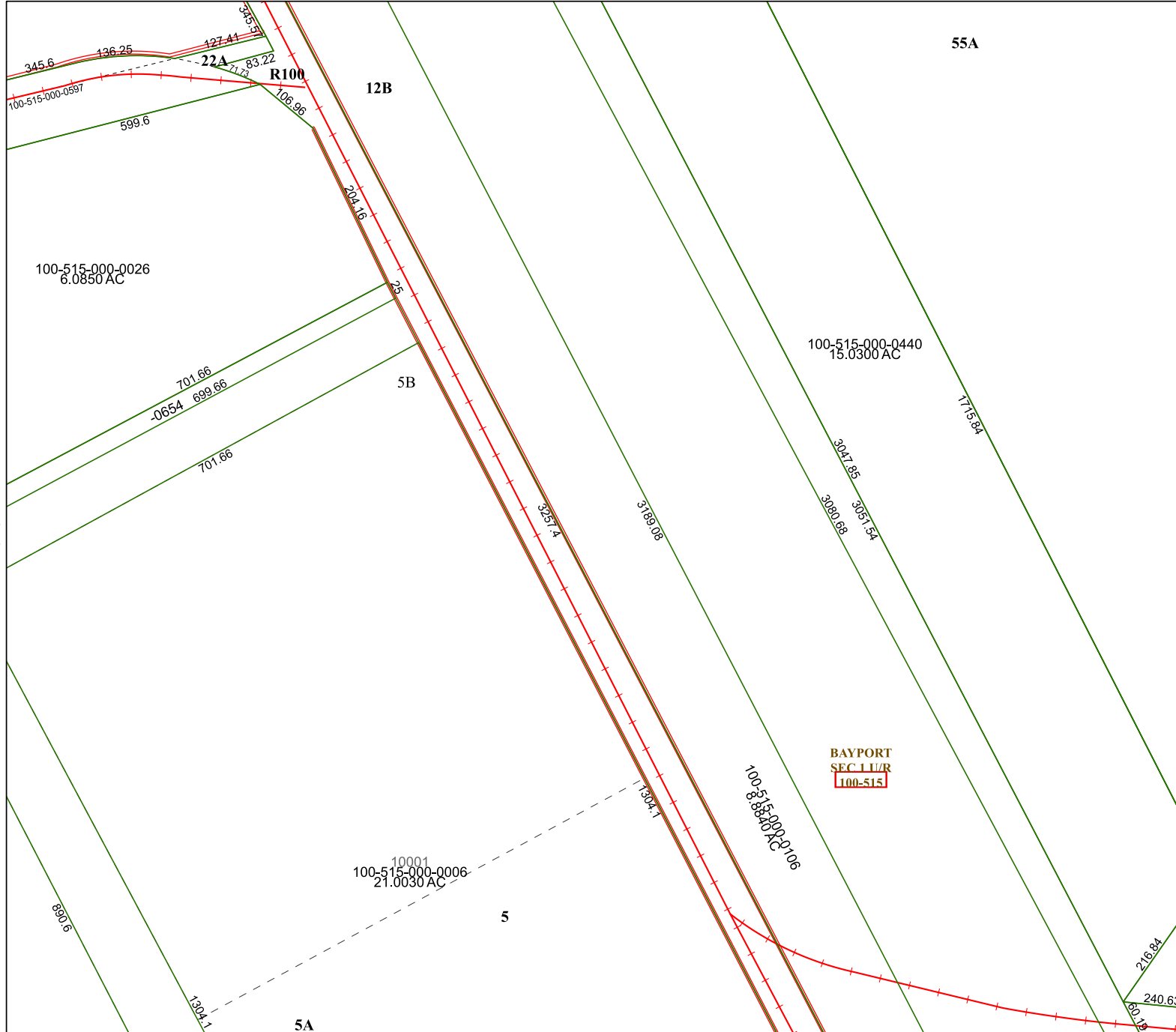


FACET 6151B3

9	10	11	12	9
1	2	3	4	1
5	6	7	8	5

6151B2

6151B4



6151B7