

6151D1

Harris Central Appraisal District



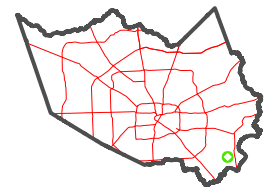
0 45 90 180 Feet

PUBLICATION DATE:
1/13/2025

Geospatial or map data maintained by the Harris Central Appraisal District is for informational purposes and may not have been prepared for or be suitable for legal, engineering, or surveying purposes. It does not represent an on-the-ground survey and only represents the approximate location of property boundaries.



MAP LOCATION



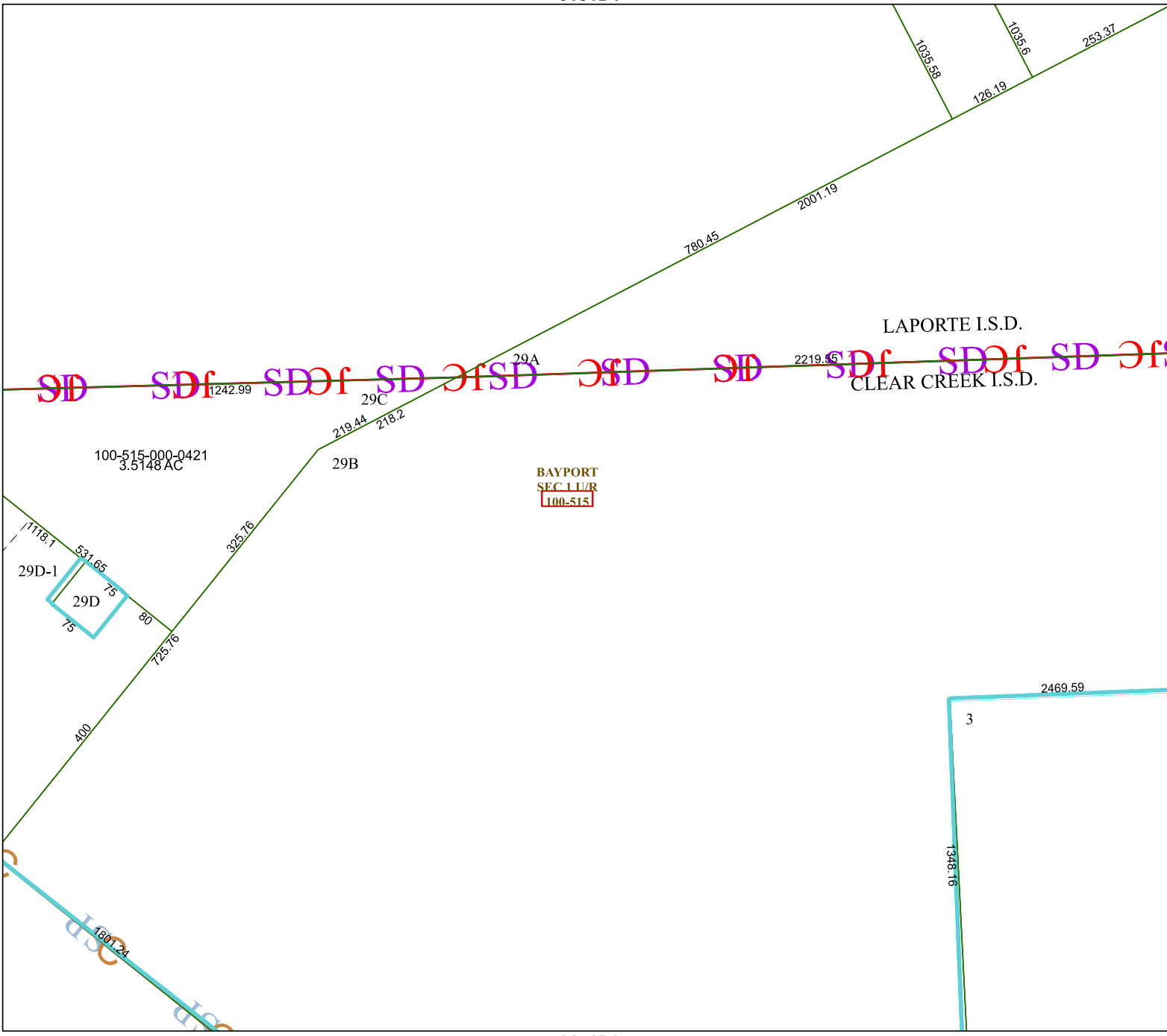
FACET 6151D5

3	4	1	2	3
7	8	5	6	7
11	12	9	10	11

6151D9

6151C8

6151D6



LAPORTE I.S.D.
CLEAR CREEK I.S.D.