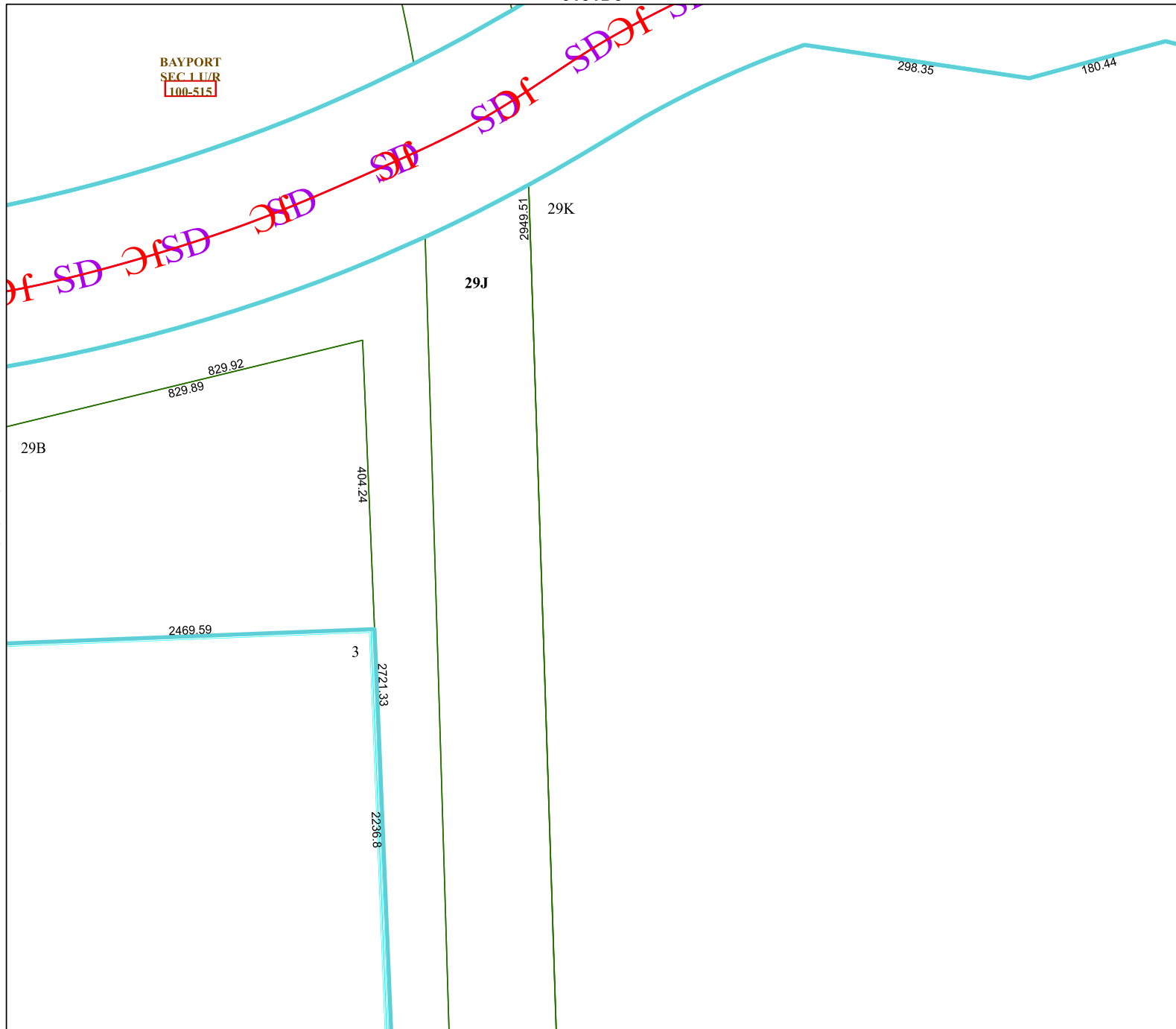


6151D3

BAYPORT
SEC 11U/R
100-515



6151D6

Harris Central Appraisal District



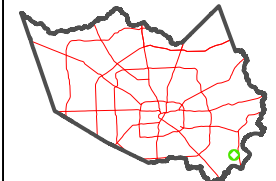
0 45 90 180 Feet

PUBLICATION DATE:
1/13/2025

Geospatial or map data maintained by the Harris Central Appraisal District is for informational purposes and may **not** have been prepared for or be suitable for legal, engineering, or surveying purposes. It does **not** represent an on-the-ground survey and only represents the approximate location of property boundaries.



MAP LOCATION



FACET 6151D7

1	2	3	4	1
5	6	7	8	5
9	10	11	12	9

6151D11

6151D8