

6152A2

1832.44

68A-1A

383.7

1650.96

100-515-000-0409
13.0500 AC

67

397.01

1571.23

BAYPORT
SEC. 11 U/R
100-515

6152A5

Harris Central Appraisal District



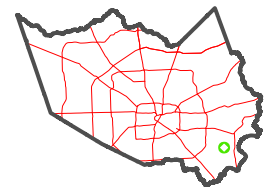
0 45 90 180
Feet

PUBLICATION DATE:
4/22/2024

Geospatial or map data maintained by the Harris Central Appraisal District is for informational purposes and may not have been prepared for or be suitable for legal, engineering, or surveying purposes. It does not represent an on-the-ground survey and only represents the approximate location of property boundaries.

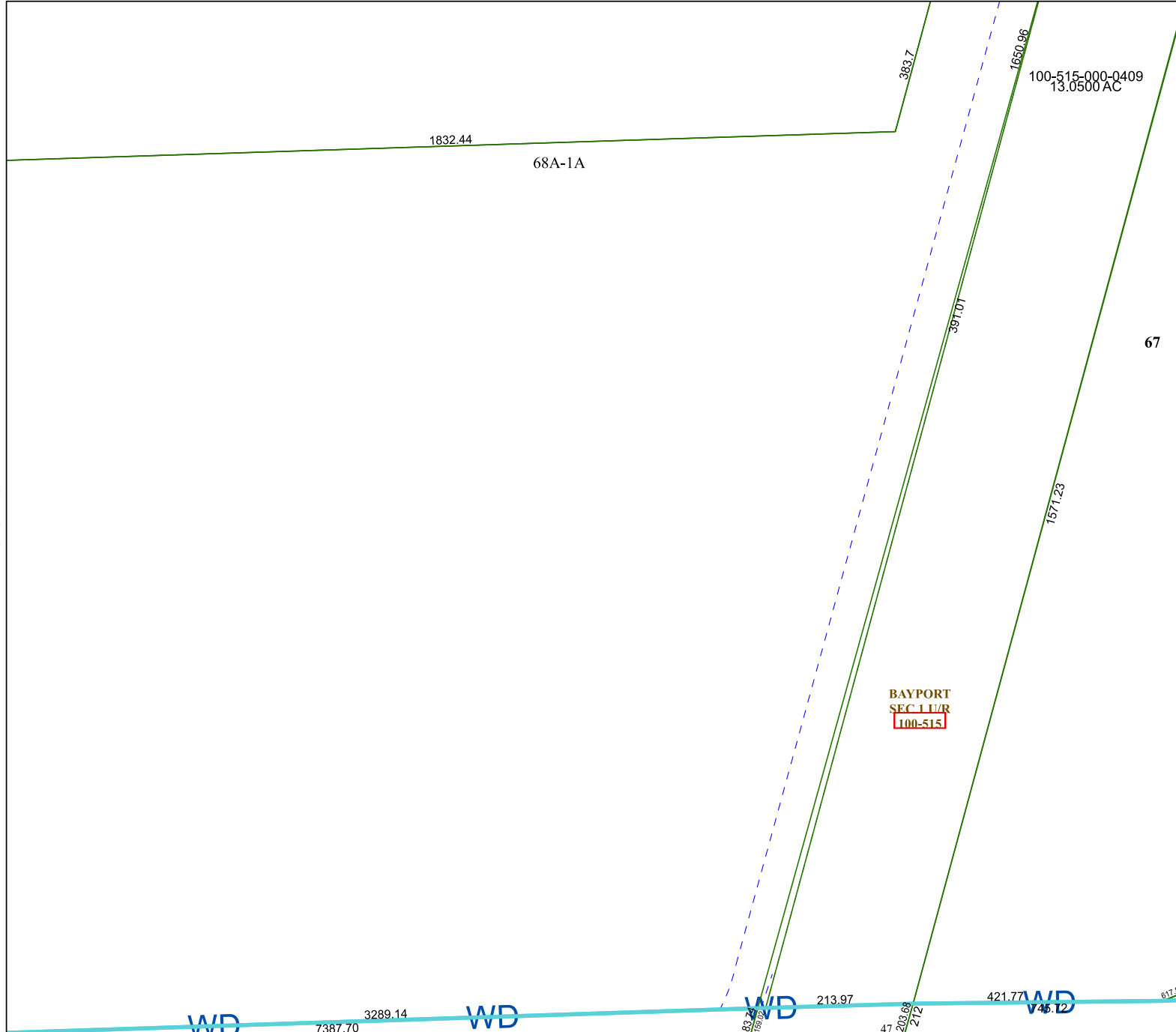


MAP LOCATION



FACET 6152A6

4	1	2	3	4
8	5	6	7	8
12	9	10	11	12



6152A10

WD

7387.70

3289.14

WD

WD

213.97

421.77

45.12

617.88

83.74

159.88

47

203.88

272