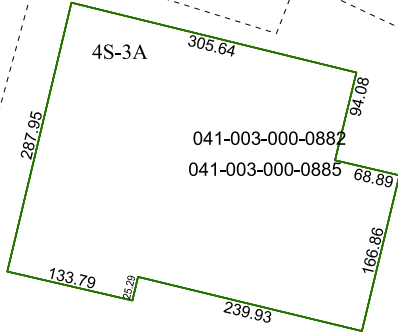


6152A9

6052D4



4S-2

5761  
112.7506 AC

4S-1

4S-3

721

600

1185.41

792.31

6152C5

# Harris Central Appraisal District



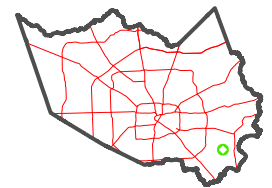
0 45 90 180 Feet

PUBLICATION DATE:  
1/4/2023

Geospatial or map data maintained by the Harris Central Appraisal District is for informational purposes and may **not** have been prepared for or be suitable for legal, engineering, or surveying purposes. It does **not** represent an on-the-ground survey and only represents the approximate location of property boundaries.



### MAP LOCATION



## FACET 6152C1

11	12	9	10	11
3	4	1	2	3
7	8	5	6	7