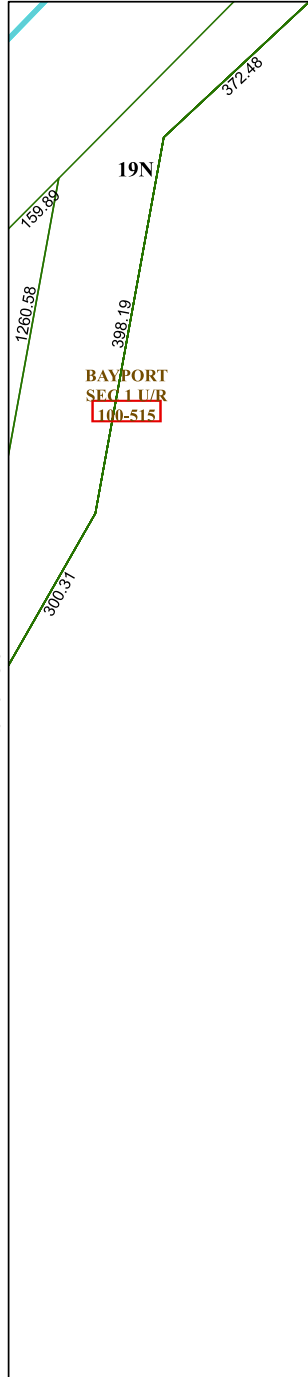


6152C6

6152C9



Harris Central Appraisal District



0 45 90 180 Feet

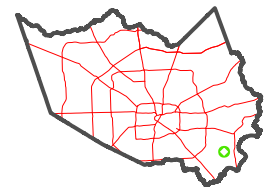
PUBLICATION DATE:
1/13/2025

Geospatial or map data maintained by the Harris Central Appraisal District is for informational purposes and may **not** have been prepared for or be suitable for legal, engineering, or surveying purposes. It does **not** represent an on-the-ground survey and only represents the approximate location of property boundaries.



6152C11

MAP LOCATION



FACET 6152C10

8	5	6	7	8
12	9	10	11	12
4	1	2	3	4

6151A2